

POLYCLIM NG 50

DESCRIPTION

Single block climate regulator
with 12 24VAC relay outputs,
8 analogue inputs and
4 discrete inputs



FUNCTIONS

FUNCTIONS		Description	Number of outputs
	1 side or single pitch ventilation	Regulation proportional to ambient temperature Weather protection (wind, rain) Outside influences (wind, wind vane, outside temperature, sunshine) 24-hour temperature integration	2
	Ventilation on 2 sides or double roof pitch	Regulation proportional to ambient temperature Weather protection (wind, rain) Outside influences (wind, wind vane, outside temperature, sunshine) 24-hour temperature integration	4
	Ventilation on 2 sides or double roof pitch	Regulation proportional to ambient temperature Weather protection (wind, rain) Outside influences (wind, wind vane, outside temperature, sunshine) 24-hour temperature integration	4
	On-off heating (discrete)	Thermostatic regulation depending on the ambient temperature Possibility of managing a circulator at one water temperature separately from the unit heater.	1
	Inflation	Fan operation management by cue and difference Outside influence (wind speed)	1

POLYCLIM NG 50

OPTIONS AVAILABLE (SUBJECT TO THE NUMBER OF REMAINING OUTPUTS & POSSIBLE MODIFICATION OF STANDARD FUNCTIONS)

FUNCTIONS	Description	Number of outputs	REF
Heating 3-way valve + circulator	Proportional regulation depending on the ambient temperature and the water circuit temperature Outside influences (wind, outside temperature, sunshine) Circulator management depending on the water circuit temperature. 24-hour temperature integration	3	CLI5500
FOG	Regulation proportional to ambient temperature and/or humidity Influence on the ventilation	1	CLI5503
CO2	Cue and difference management of CO2 injection operation Influence on the ventilation	1	CLI5504
Cooling	Management of a pump and 1 to 3 extractor units depending on the ambient temperature Influence on the ventilation	2 to 4	CLI5505
Clock / lighting	Start-up based on hourly start times or depending on connected sensors (adjustable thresholds). Applications: photosynthetic lighting, irrigation, etc.	1	CLI5506

CONNECTIVITY

Phone/tablet access

Anjou Automation POLYCLIM NG 21

Accueil Alarmes Météo Zone 1 Archivages Système Déconnexion

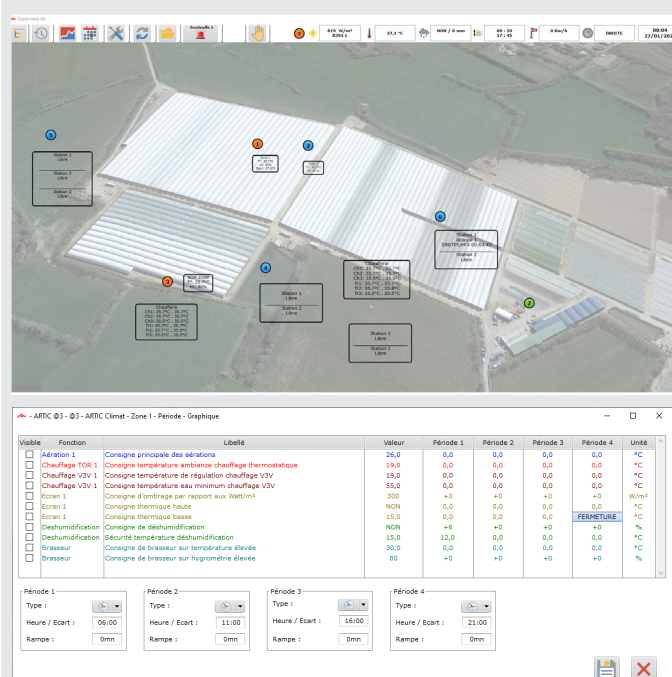
Zone 1 : Consignes / Consignes Principales

Reference	Désignation	Valeur	Unité
AA01	Aération : Cons. Princ. Aération	12.0	°C
AB01	Chauffage TOR : Cons. Tamb Ch. TOR	19.0	°C
AD01	Ecran : Cons. Ensoleillement	300	W/m²
AD02	Ecran : Cons. Therm. haute	NON	°C
AD03	Ecran : Cons. Therm. basse	15.0	°C
AE01	Déshumidif. : Cons. Déshumidifcat	NON	%
AE02	Déshumidif. : Sécurité température	15.0	°C
AF01	Brasseur : Cons. Température	30.0	°C

Retour Actualiser Valider

using SIMA box - CLI1680

Compatible with Supervision



using ARTIC Sentinel box - CLI1690

POLYCLIM NG 50

COMPATIBLE INDOOR SENSORS

Photo	Ref	Signal	Range	Ventilated	CLI7050 compatible	CLI7050/420 compatible
	Ambient temperature sensor					
	CAP0001	CTN	-34° / 100°	NON	X	
	CAP0010	4-20mA	-34° / 100°	NON		X
	CAP0010.V	4-20mA	-34° / 100°	OUI		X
	Humidity sensor					
	CAP0004	4-20mA	0 / 100%	NON	X	X
	Ambient temperature and humidity sensor					
	CAP0024	4-20mA	-34° / 100°	NON		X
	CAP0024.V	4-20mA	-34° / 100°	OUI		X
	Thimble water sensor					
	CAP0003	CTN	-34° / 100°	-	X	
	CAP0012	4-20mA	-34° / 100°	-		X
	Surface mounted water sensor					
	CAP0003.A	CTN	-34° / 100°	-	X	
	CAP0012.A	4-20mA	-34° / 100°	-		X
	Ground temperature sensor					
	CAP0002	CTN	-34° / 100°	-	X	
	CAP0011	4-20mA	-34° / 100°	-		X
	CO2 sensor					
	CAP0040	4-20mA	0 - 5000 ppm	NON	X	X

POLYCLIM NG 50

COMPATIBLE WEATHER SENSORS

Photo	Ref	Measurement	Signal	Range
	Outdoor temperature sensor			
	CAP0001	Temperature	CTN	-34° / 100°
	CAP0071	Temperature	4- 20mA	-34° / 100°
	Outside humidity sensor			
	CAP0004	Humidity	4- 20mA	0 / 100%
	Outside temperature and humidity sensor			
	CAP0072	Temperature & Humidity	4- 20mA	-34° / 100°
	Wind vane sensor			
	CAP0022	Wind direction	Dry contact	2 directions
	CAP0025	Wind direction	4- 20mA	0-360°
	Wind sensor			
	CAP0021	Wind speed	Frequency	-
	Rain sensor			
	CAP0030	Rain detection	DISCRETE	-