

**Climate regulation,
irrigation and
mechanisation
devices**



Catalogue

2023

**Anjou
Automation**

INNOVATION IS PART OF OUR CULTURE

General terms and conditions of sale

(applicable from 1st December 2022)

Except in the case of a special, written agreement, all orders automatically imply the customer's acceptance of these conditions, notwithstanding any contrary clause which may appear in the customer's general terms and conditions of purchase.

2 - ORDERS - ESTIMATES

Orders only become final after written or tacit acceptance by ANJOU AUTOMATION, hereinafter referred to as "the Company". If an estimate is provided, the order only becomes final after returning the accepted estimate to the Company by post, fax or by any other means of transmission, within eight days of its issue. Any modification of an order or estimate shall be subject to a written agreement between the Company and the customer.

3 - DELIVERY TIMES

Deliveries are made according to supply and transport availabilities, in the order of arrival of orders and according to the indications provided by the Company in its acceptance. The Company is authorised to make total or partial deliveries. Delivery times are provided for information purposes and are not binding on the Company, especially in cases of force majeure or unforeseeable circumstances. No delay in delivery may give rise to the application of penalties or damages, to any withholding or the cancellation of the order. In any event, deliveries may only be made to a customer if it is up to date with its obligations vis-à-vis the Company.

4 - DELIVERIES

Prices are given excluding tax, ex-works, packaging included. Unless otherwise indicated in the order or on the accepted estimate, all orders are shipped excluding carriage. All costs of an express delivery shall be fully borne by the customer who makes such a request. Goods become the customer's property on leaving the Company's workshops, subject to the retention of title clause below. Consequently, all transport, customs, insurance and handling operations are carried out at the customer's expense and risk. The customer must check the compliance of the shipment, and for any damage or missing items and, if necessary, make the necessary reservations, by registered letter with acknowledgement of receipt and in the legal time limits, to the concerned bodies and carriers. The customer shall notify this to the Company. The return of a product must be subject to a formal agreement between the Company and the customer.

5 - WARRANTIES

The Company has a duty to deliver goods which comply with the contract and is liable for any lack of conformity which may exist on delivery. To comply with the contract, the product must:

- Be fit for any use usually expected of such goods and, when applicable, match the description given by the Company, and have the characteristics it presented to the customer in the form of samples or models;
- Have the qualities the customer can legitimately expect given the declarations made by the Company, in particular in its advertising;
- Or present the characteristics defined in mutual agreement between the parties;
- Or be fit for any special use required by the customer, which the Company has been informed of and accepted.

Electrical devices are guaranteed for one year from the date of purchase, against any manufacturing defect. The warranty entirely covers parts and labour. The warranty covers the replacement of any defective part, but does not cover breakages caused by dropping or knocks, deterioration caused by abnormal use, connection errors or non-compliance with the conditions of use indicated in the user guide.

6 - SALES TERMS AND CONDITIONS SPECIFIC TO THE "GREENHOUSE CLIMATE REGULATION" ACTIVITY

ANJOU AUTOMATION's climate controllers are not safety devices. Therefore, it is the responsibility of each buyer and/or operator to implement all control and alarm systems necessary for the security of its greenhouses (both for the structures and for the crops). The Company remains at the disposal of its customers or operators for all advice on this matter.

7 - PRICES

The prices and information appearing in the Company's catalogues or other advertising material are the sole responsibility of the Company, which reserves the right to make any modifications in the form, dimensions, materials or weight of its products presented or described, without any obligation to modify products previously delivered or already ordered. Goods are invoiced on the basis of the price in force at the time of the order. Payments are made to the Company's registered office. Unless otherwise stipulated, orders are payable in cash when the goods are collected, net and without discount. Any other payment terms must be subject to a prior agreement. In the absence of payment of a single term, all amounts due shall be immediately payable, without formalities, and shall be accompanied by a penalty equal to 3 times the legal interest rate. In addition, a flat-rate indemnity for recovery costs of an amount of 40 Euros will be automatically due, without formalities. If the recovery costs are higher than this flat-rate amount, an additional indemnity will be due, on the presentation of supporting documents. The Company may also suspend any further deliveries.

8 - RETENTION OF TITLE

The Company retains full ownership of the goods sold until payment in full by the customer. However, the risks of loss, theft or deterioration of the goods are borne exclusively by the customer as soon as they are made available to it. The non-payment of any amount when due may give rise to the claim of the existing goods.

9 - INTELLECTUAL PROPERTY

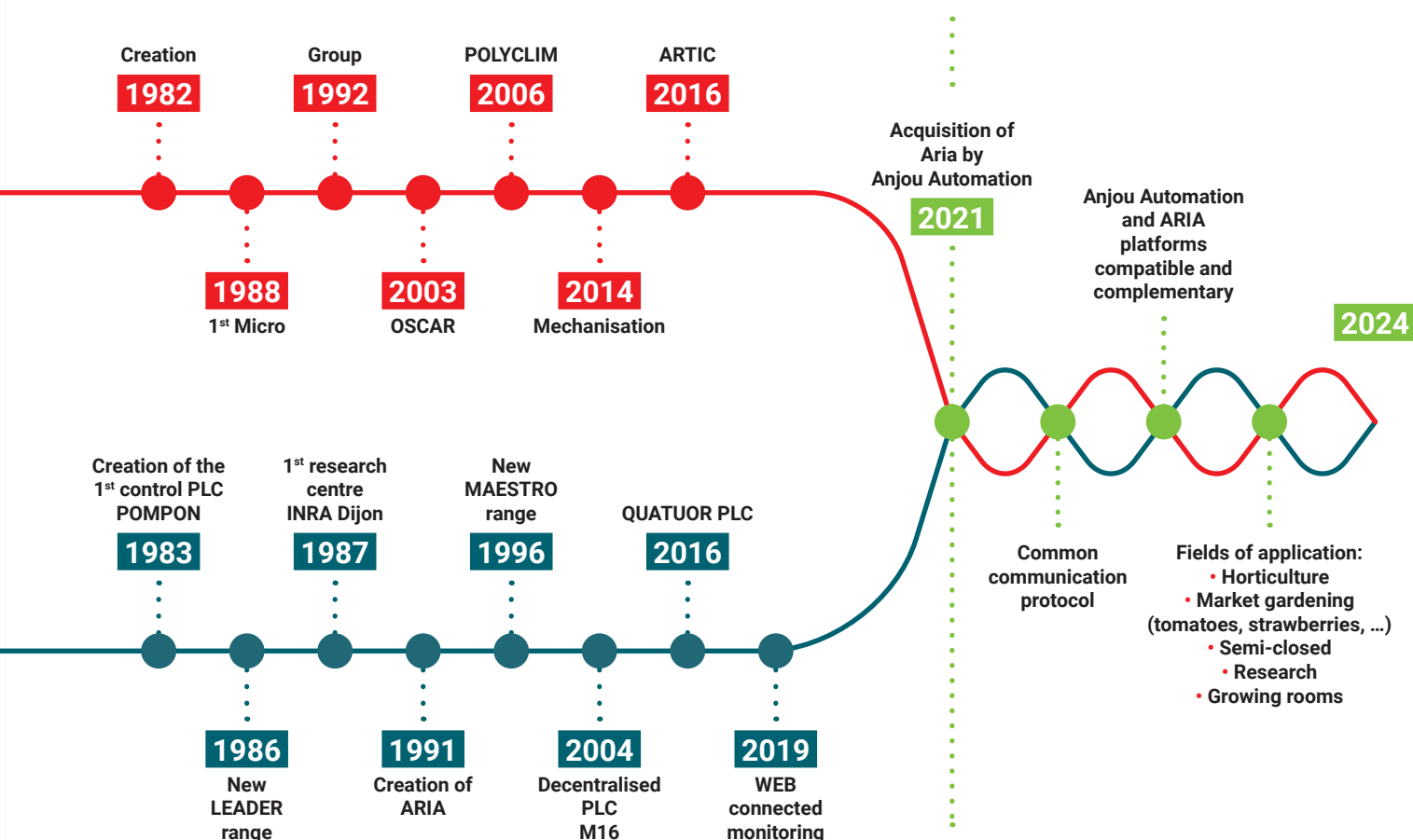
The designs, models, plans and estimates and, generally, the documents of any nature communicated by the Company are the exclusive intellectual property of the Company: they may not be communicated or executed without its written authorisation. They must be returned upon the Company's simple request.

10 - APPLICATION OF CONVENTIONS

No delay, omission or tolerance by the Company in the exercise of one of its rights hereunder shall constitute a waiver by the Company to assert this right.

11 - ATTRIBUTION OF JURISDICTION

In the event of a dispute, the Company and the customer concerned shall settle it by means of arbitration carried out by a single arbitrator acting as amiable compositeur, chosen by common agreement or, otherwise, appointed at the request of the most diligent party by the President of the Commercial Court of Roche-sur-Yon. The parties waive any appeal and any recourse against the arbitral award which will be rendered final and undertake to comply therewith, without any enforcement procedure.



ARIA puts technology at the service of growing condition control. Its climate regulation systems for glass and plastic greenhouses and irrigation and fertilisation management can be customised to meet the most varied requirements.

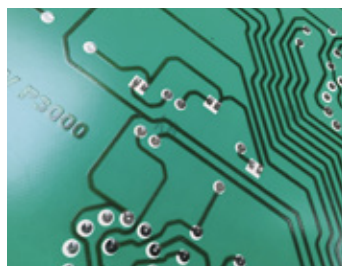
From interfaced sensors, to PLCs and monitoring, ARIA masters the entire design, development and production chain, both for the electronics and the software, and thereby guarantees sustained bespoke and high end services.

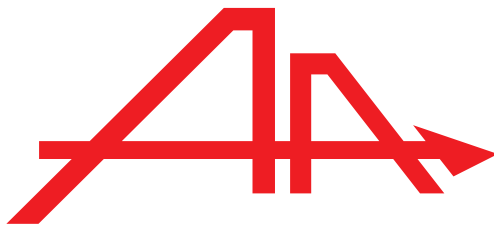
Domaine de Villemorant
Ecoparc de Sologne
41210 Neung sur Beuvron • FRANCE
Tél. 02 54 95 67 67
info@ariafrance.fr
www.ariafrance.fr



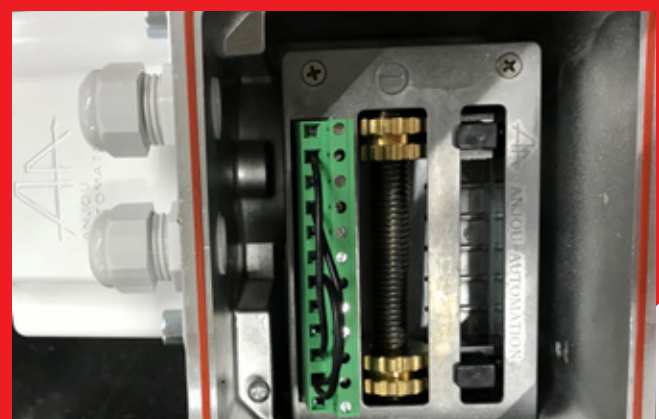
Anjou Automation was created in 1982. It designs and manufactures regulation and automation equipment for sectors such as the agri-food, environment and automotive industries.

Based on techniques that use digital electronics and industrial IT, the business was able to develop innovating lines of standard products that are perfectly suited to user needs and is also available to create bespoke products.





Today, Anjou Automation is recognised all over the world for its greenhouse climate and irrigation regulators, its weather sensors and its Mechanisation line.



Anjou Automation activities

HORTICULTURE - MARKET GARDENING

CLIMATE MANAGEMENT



MECHANISATION



IRRIGATION MANAGEMENT



FERTILISATION MANAGEMENT



POWER / ELECTRICITY



PUMPING MANAGEMENT



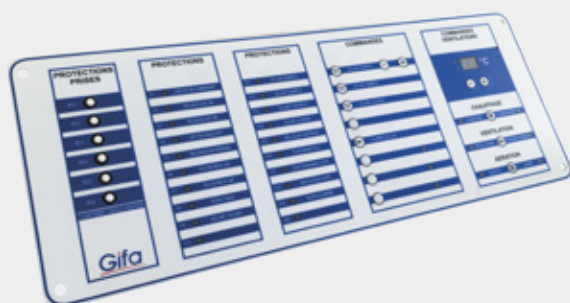
AGRI-FOOD INDUSTRY

LEVEL DETECTION



AUTOMOTIVE

CONTROL PANEL



MACHINERY

REMOTE MACHINE CONTROL



Contents

General terms and conditions of sale	2
Anjou - Aria	3
Company presentation	4-5
Anjou Automation activities	6-7

CLIMATE 8-21

Selection guide	8
Available software functions	9
Choosing the right regulator	10-11
RGAP / CLIMTOP / VIGICALL	12
POLYCLIM 2000 product line	13
POLYCLIM NG	14-15
KAIROS	16-17
ARTIC	18-21

SUPERVISION 22-27

Regulator display	22-23
Remote access embedded website	24
SIMA : stand-alone alarm system	25
Supervision	26-27

SENSORS 28-29

Indoor sensors	28
Outdoor sensors	29

POWER 30-31

Power boxes	30-31
-------------	-------

MECHANISATION 32-41

New gear motor	32-33
Manual gearboxes	34-35
Accessories	36
Telescopic arms	37
Gear motors	38-40
MISSI range	41

IRRIGATION 42-47

Irrigation trolley management	42
Selection guide	43
POLYPROG 12 - MICROFERTI	44
Anjou Fertil	45
NERO	46-47

PUMPING 48-51

VIZIA	48-49
Direct / soft start	50
Accessories	50
Soft start cabinet	51

SELECTION GUIDE

POLYCLIM 2000 PRODUCT LINE

- Management of one climate
- Pre-defined functions depending on the model
- Delivered with sensor
- Built-in manual controls
- Non-supervisable



More information on page 13

POLYCLIM NG

- Management of one climate zone - several zones on specific configurations
- Pre-defined functions with possibility of adding functions
- Built-in manual controls
- Embedded website and compatible with Supervision



More information on page 14

KAIROS

- Management of 1 to 6 climate zones depending on the number of outputs per zone
- Functions configurable depending on the project
- Embedded website and compatible with Supervision



More information on page 16

ARTIC

- Management of 1 to 12 climate zones
- Irrigation, fertilisation and boiler room management
- Functions configurable depending on the project
- Embedded or box version
- Embedded web site and compatible with Supervision



More information on page 18

AVAILABLE SOFTWARE FUNCTIONS



FUNCTIONS AVAILABLE

Functions	Description	Number of outputs
Ventilation on 1 side	Regulation proportional to the ambient temperature Weather safety systems (wind and rain) Outside influences (wind, wind vane, outside temperature and sunlight) Temperature integration over 24 hours	2
Ventilation on both sides		4
Shade screen / thermal screen	Shading mode depending on sunlight (Watt/m ²) Thermal mode depending on the ambient temperature Outside influences (outside temperature)	2
Heating ON/OFF	Thermostatic control according to the ambient temperature Possibility of managing a circulator at one water temperature separately from the unit heater	1
Heating : 3-way valve + circulator	Proportional control according to the ambient temperature and the water circuit temperature Outside influences (wind, outside temperature and sunlight) Circulator control according to the water circuit temperature Temperature integration over 24 hours	3
Deshumidification	Regulation of the ambient hygrometry Influence on ventilation, heating and shading	-
Inflation	Turbine operation control by "pulse and variation" Outside influence (wind speed)	1
Fog	Regulation proportional to the ambient temperature and/or hygrometry Influence on ventilation	1
Air mixer	Thermostatic control depending on the ambient temperature and/or hygrometry Possible combination with heating operation	1
Cooling	Control of a pump and 1 to 3 extractor pumps depending on the ambient temperature Influence on ventilation	2 to 4
CO2	CO2 injection control by "pulse and variation" Influence on ventilation	1
Clock	Starting by timer or according to the sensors connected (adjustable thresholds) Applications: photosynthetic lighting, irrigation, etc...	1
Alarm	Activation on passing a top or bottom threshold (temperature or hygrometry) or control malfunction (circuit, sensors disconnected, etc). Output normally closed when switching on	1

Choosing the regulator for your project

What needs to be managed?

Climate



The complete
regulator line

OR

Climate + Irrigation / Fertilisation



How many climate zones need to be managed?

A climate zone is a growing surface area (regardless of its size) in which the required climate is the same (temperature set point for example).

To simplify: 1 climate zone = 1 single temperature sensor

1



The complete
regulator line

From 2 to 12



Which functions should be managed in the zones?

Functions corresponding to a pre-defined model of Polyclim 2000 product line (on page 13) or Polyclim NG (on page 14)



Functions that are outside the Polyclim 2000 and Polyclim NG line pre-defined standards



Calculate the number of outputs per zone

To calculate the number of outputs per zone, list your function per zone and indicate the number of outputs for each function (**see table on page 9**).

Then add up the total number of outputs used.

For multizone regulation, the zone that uses the most outputs must be taken into account.

For example: a project with 4 climate zones

Zone 1		Zone 2		Zone 3		Zone 4	
Roof ridge aeration x2	4	Roof ridge aeration x1	2	Roof ridge aeration x2	4	Roof ridge aeration x2	4
Shade	2	Shade	2	Heating ON-OFF	1	Shade	2
Heating ON-OFF	1	Heating ON-OFF	1	V3V heating	3	Heating ON-OFF	1
		V3V heating	3			V3V heating	3
Total outputs	7	Total outputs	8	Total outputs	8	Total outputs	10

As indicated above, the zone using the most outputs must be taken into account, in this case zone 4 with 10 outputs.

By referring to the Artic table (on page 18), we can see that the 4 zone / 16 output reference is needed

RGAP

TEMPERATURE CONTROLLER

Temperature controller to control hot air generator heating. 230V supply with 2 adjustable thresholds and 2 dry contact outputs (NO+NO or NO+NF).
Supplied with a CAP0007 type temperature sensor.

RGAP with sensor

(2 NO) CLI0050

(1 NO+1 NC) CLI0051



CLIMTOP

BOX FOR SIMPLIFIED VENTILATION CONTROL

Simplified ventilation control management. Built-in motor control and protection. Automatic thermostatic control -10 / +40° (supplied) and Pulse and Deviation timer.

CLIMTOP 1 for 1 motor with thermostat

CLI0907

CLIMTOP 2 for 2 motors with thermostats

CLI0909








THERMOSTAT

Thermostat, -10°C / +40°C, 1 reverser contact
CLI0515



POLYCLIM 2000 PRODUCT LINE (NOT SUPERVISED)





POLYCLIM 2100

-  **1 side ventilation**
-  Inflation
-  Alarm
-  Internal manual mode
-  Ambient temperature sensor (supplied)

with temperature sensor
CLI5095








POLYCLIM 2150

-  **Shading screen**
-  Alarm
-  Internal manual mode
-  Watt & Lux sensor (supplied)

with Watt & Lux sensor
CLI5096








POLYCLIM 2000

-  **2 sides ventilation**
-  Inflation
-  Alarm
-  Internal manual mode
-  Ambient temperature sensor (supplied)

with temperature sensor
CLI5097



POLYCLIM 2200

-  **2 sides ventilation + 1 ridge ventilation**
-  Inflation
-  Alarm
-  Internal manual mode
-  Ambient temperature sensor (supplied)

with temperature sensor
CLI5098



SENSORS



Temperature sensor
CAP0007



Watt & Lux sensor
CAP0018



Wind sensor
CAP0021



Wind vane sensor
CAP0022



Rain sensor
CAP0030

POWER CABINETS



C1MA 1/1,6A
PUI0001



C1MA/SA/AUTO 1/1,6A
PUI0005

POLYCLIM NG (MAX. 13 OUTPUTS)

Adapt your Polyclim NG to your project

All Polyclim NGs have one month archiving and 4 period management.
The 13th relay output must be the alarm.



	Designation	Number of ventilation(s)	Shading screen	On / OFF heating	Air mixer	Inflation	Nbr of used outputs	Nbr of outputs remaining	Reference	Price
1 CLIMATE ZONE	POLYCLIM NG 01		X				2	10	CLI7009	
	POLYCLIM NG 10	1		X	X	X	8	4	CLI7010	
	POLYCLIM NG 11	1	X	X	X	X	7	5	CLI7011	
	POLYCLIM NG 20	2		X	X	X	7	5	CLI7020	
	POLYCLIM NG 21	2	X	X	X	X	9	3	CLI7021	
	POLYCLIM NG 30	3		X	X	X	9	3	CLI7030	
	POLYCLIM NG 31	3	X	X	X	X	11	1	CLI7031	
	POLYCLIM NG 40	4		X	X	X	11	1	CLI7040	
	POLYCLIM NG 41	4	X	X		X	12	0	CLI7041	
	POLYCLIM NG 50	5		X		X	12	0	CLI7050	
MULTIZONE	POLYCLIM NG 01-2Z		1 by zone				4	8	CLI7118	
	POLYCLIM NG 01-3Z		1 by zone				6	6	CLI7119	
	POLYCLIM NG 01-4Z		1 by zone				8	4	CLI7120	
	POLYCLIM NG 10-2Z	1 by zone		1 by zone	1 by zone	X	9	3	CLI7102	
	POLYCLIM NG 10-3Z	1 by zone		1 by zone		X	10	2	CLI7103	
	POLYCLIM NG 10-4Z-CH	1 by zone		1 by zone			12	0	CLI7104	
	POLYCLIM NG 10-4Z-G	1 by zone				X	9	3	CLI7105	
	POLYCLIM NG 11-2Z	1 by zone	1 by zone	1 by zone		X	10	2	CLI7110	
	POLYCLIM NG 20-2Z	2 by zone		1 by zone		X	11	1	CLI7202	

Available options (depending on the remaining number of outputs)

Designation	Nbr of output(s)	Reference
3-way valve heating + circulator	3	CLI5500
FOG	1	CLI5503
CO2	1	CLI5504
Cooling	2 to 4	CLI5505
Clock	1	CLI5506

SPECIFIC 4/20MA REFERENCE

Now each Polyclim NG fitted with a 4-20mA sensor will have "/420" at the end of its reference.

Example: Polyclim NG 20 + temperature / humidity sensor (CAP0024) will have CLI7020/420 as its reference

If you operate using a sensor stock, please indicate the possible presence of a 4-20mA sensor in order to properly configure your Polyclim NG inputs

IMPORTANT: all the sensors must be 4-20mA in that case (water, pot and ambient sensors)

Weather sensors

p. 29



Temperature
CAP0001



Anemometer
CAP0021



2D or 360°
weather vane
CAP0022/25



Rain
CAP0030



Watt/Lux
CAP0018

Indoor sensors

p. 28



Temperature
CAP0001



Humidity
CAP0004



Water temperature
CAP0003



CO²
CAP0040



Pot/soil
temperature
CAP0002

Shielded twisted cable

Shielded twisted cable

p. 24



RJ45

p. 14



RS485

p. 27

Sentinelle CLI1690

RJ45



Supervisor software

Built-in
web site



p. 30



Motor power
control box

p. 31



C1MG

p. 31



C1MC

p. 40



Ridge/shading
gear motor

p. 38



Side ventilation
gear motor

p. 37



Telescopic arm

KAIROS Regulator

The KAIROS regulator is a next generation climatic management computer. Between the Polyclim NG and the ARTIC, the KAIROS makes it possible to provide an ergonomic and cost effective solution for your multi-zone projects.

It has a colour touch screen and an embedded website providing the best browsing and the possibility of monitoring your installation remotely. Compatible with ARTIC supervision, the KAIROS is perfectly adapted to new or refurbishment projects. Its USB port can be used for easy software updates (new version, added function).

The KAIROS is delivered in kit form ready to be fitted into your control / power cabinet.



CLIMATE

- From 1 to 6 climate zones with 8 (6Z), 16 (4Z) or 24 (2Z) outputs
- Full weather management
- Boiler-room module (1 boiler + 1 transport)
- External fault management: 3 standard + 16 optional

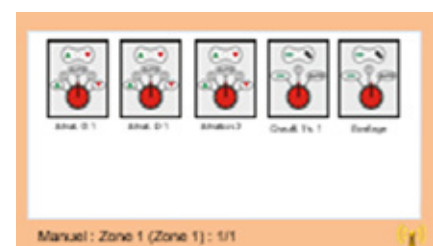
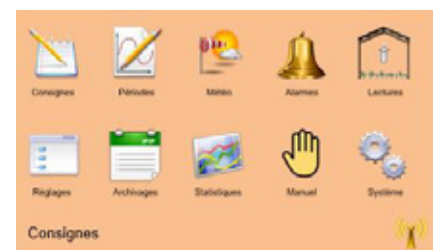
SUPERVISION

- Compatible with ARTIC supervision
- 4G access from embedded web site (see page 24-25)

ADVANTAGES

- Instant zone temperature and weather displays
- Easy icon access to menus and settings
- Value entry using a touch numeric keypad
- Setting backups and restores using the embedded website
- Software and configuration upgrades using a basic USB thumb drive
- Virtual manual mode: the 3 and 5 position switches for all functions are included on the screen

On its 5 inch colour touch screen, browsing through the KAIROS settings is fluid. The KAIROS includes one month of archives (alarms, events, statistics) and management of 4 periods.



KAIROS: CLIMATE MANAGEMENT

Climate management	8 outputs by zone CLI5808 / 01 - 06	16 outputs by zone CLI5816 / 01 - 04	24 outputs by zone CLI5824 / 01 - 02
1 zone - Ref /01			
2 zones - Ref /02			
3 zones - Ref /03			
4 zones - Ref /04			
5 zones - Ref /05			
6 zones - Ref /06			

KAIROS: BOILER ROOM MANAGEMENT

Boiler room module (management of 1 boiler + 1 transport)
CLI5835

KAIROS: EXTERNAL FAULT MANAGEMENT

16 fault input module
CLI1681

KAIROS: CABINET INSTALLATION

The HMI and input/output boards are built into a sheet metal cabinet (size depending on the configuration)
CLI5840

KAIROS: 4G ACCESS

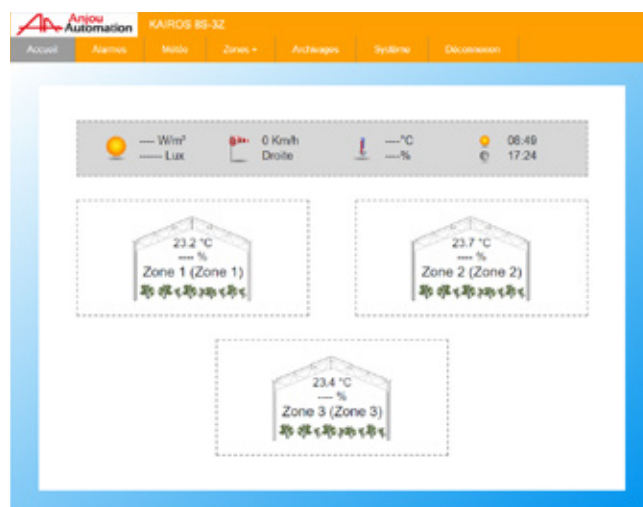
SIMA box
CLI1680

p. 25

2-year subscription to a secure 4G connection
CLI1662

The secure 4G connection makes it possible for you to connect to the embedded KAIROS web site from outside your installation from any device that has a web browser (PC, tablet and smartphone). Our services fully secure this connection and guarantee the protection of your regulator and your computer system.

Web site view



ARTIC REGULATOR (12 X 24 OUTPUTS MAX.)

Regulator ARTIC

The ARTIC REGULATOR is a latest generation climate and Fertilisation / Irrigation management computer. It is compatible with ANJOU AUTOMATION line sensors and can be connected to the Sentinelle ARTIC. Its wide, colour touch screen makes its configuration and the use of its data both simple and userfriendly. Its processor power makes regulation accurate and effective. Its onboard SD card makes it possible to locally store data safely for easy use. Its USB port can be used for easy software updates (new version, added function).



CLIMATE

- From 1 to 12 zones with 8, 16 or 24 outputs
- Boiler room module (3 boilers, 3 transports, cascade, storage tank)
- Weather management

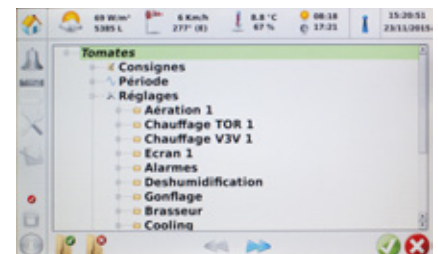
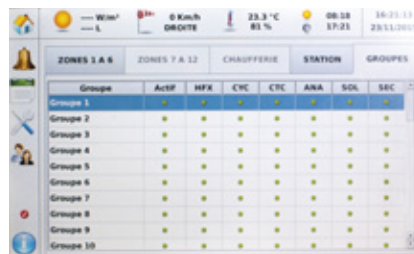
IRRIGATION

- Up to 40 groups
- Management of 6 to 94 valves
- Management of 2 to 18 motors (master valve, pump, mixers, etc.)
- Management of 2 stations: fertilisation and clean water
- Other characteristics: identical to the NERO (see page 46)

THE PLUSSES:

- Zone temperature, weather, station status at a glance
- Easier access to menus and settings using icons and tree structure navigation
- Value entry using a numeric keypad
- Configuration copy and restore (from one zone to another)
- Data archival (events, alarms, etc.) for an unlimited period
- 100% compatible with current supervision
- Software or configuration upgrades using a USB stick

Equipped with a 7 inch, colour touch screen, it is as easy to use as a tablet. It is fitted with SD card memory making it possible to record almost unlimited temperatures, events and alarms. Updates are very easy: just connect a USB stick.

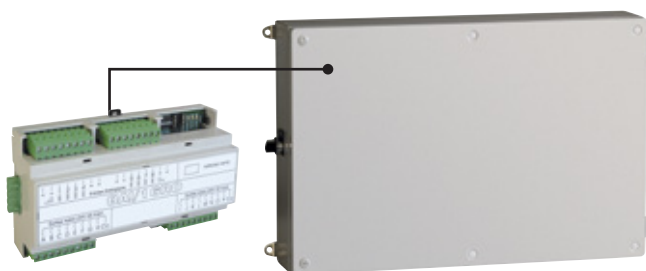


ARTIC : CLIMATE MANAGEMENT

Climate management	8 outputs by zone CLI6308 / 01 - 12	16 outputs by zone CLI6316 / 01 - 12	24 outputs by zone CLI6324 / 01 - 12
1 zone - Ref /01			
2 zones - Ref /02			
3 zones - Ref /03			
4 zones - Ref /04			
5 zones - Ref /05			
6 zones - Ref /06			
7 zones - Ref /07			
8 zones - Ref /08			
9 zones - Ref /09			
10 zones - Ref /10			
11 zones - Ref /11			
12 zones - Ref /12			

ARTIC : IRRIGATION MANAGEMENT

16 channels module (Valve or motors)
PRO1007



Irrigation cabinet for ARTIC
PRO1009

ARTIC : FERTILIZATION MANAGEMENT

8 channels injection module for venturi lines
PRO1001

2 analogs outputs 0/10V module for fertiliser / acid / Pressure regulation
PRO1003

8 dry contacts inputs / 8 analogs inputs module
PRO1008

EC sensor 0/10ms with screw mounting
PRO1011

PH sensor 0/10 with screw mounting
PRO1012

Interface EC sensor module, digital calibration
PRO1013

Interface PH sensor module, digital calibration
PRO1014

Drainage (6 tanks) / pre-mixing (1 valve) module
PRO1015

ARTIC - BOILER ROOM & SUPERVISION

ARTIC : BOILER ROOM MANAGEMENT

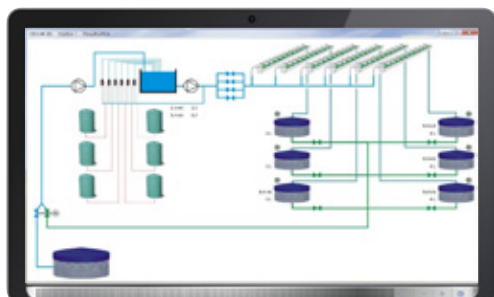
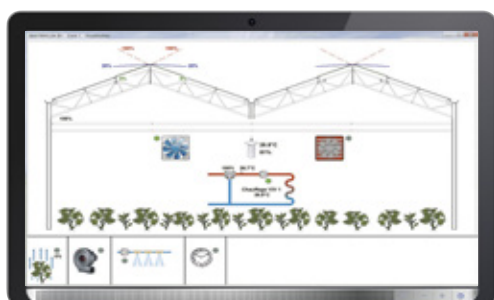
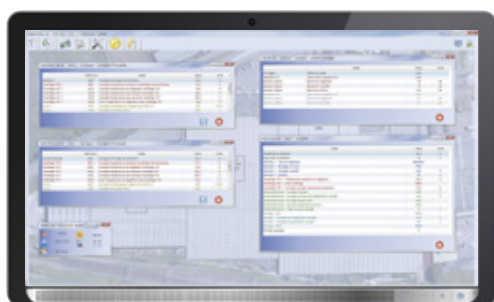
Boiler room module (management of 3 boilers + 3 transports)
CLI6035

Boiler room + open buffer module (management of 3 boilers + 3 transports + "open buffer" type storage tank)
CLI6036

ARTIC: SUPERVISION

Artic monitoring software for a single Artic (if several Artic in supervision, see ref. CLI1690 p.27)
CLI1650

Supervision view



ARTIC : EXTERNAL DEFAULT MANAGEMENT

16 fault input module
CLI1681

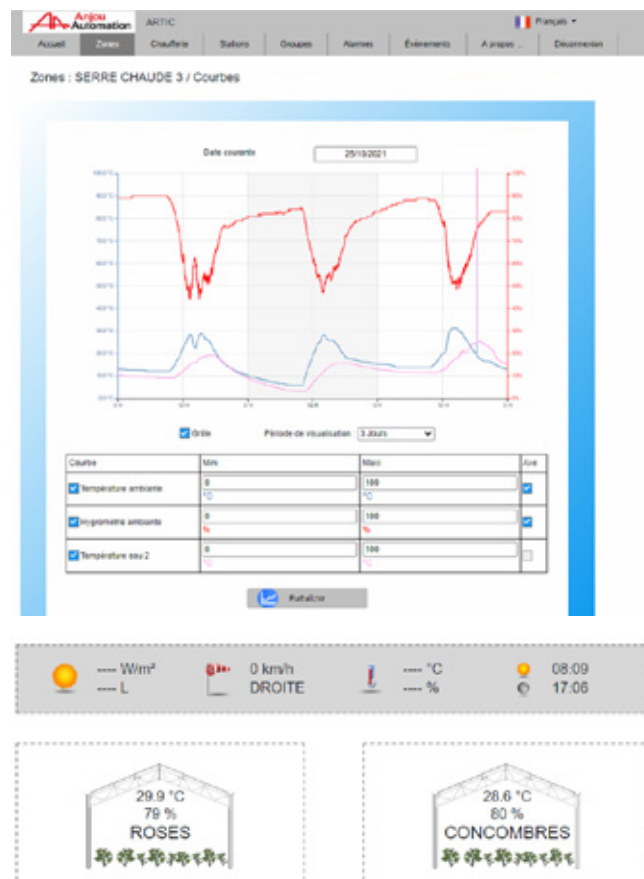
ARTIC : 4G ACCESS

Text alarm option + 4G network access on ARTIC
CLI1661

2-year subscription to a secure 4G CLI1162 connection
CLI1662

The secure 4G connection makes it possible for you to connect to the embedded Artic web site from outside your installation from any device that has a web browser (PC, tablet and smartphone). Our services fully secure this connection and guarantee the protection of your regulator and your computer system.

Web site view



Weather sensors

p. 29



Temperature
CAP0010



Anemometer
CAP0021



2D or 360°
weather vane
CAP0022/25



Rain
CAP0030



Watt/Lux
CAP0018

Indoor sensors

p. 28



Temperature
CAP0010



Humidity
CAP0004



Water temperature
CAP0012



CO²
CAP0040



Pot/soil
temperature
CAP0011

Shielded twisted cable

Shielded twisted cable

p. 24



RJ45

ANJOU 4G modem

p. 18



RS485

p. 27

Sentinelle CLI1690

RJ45

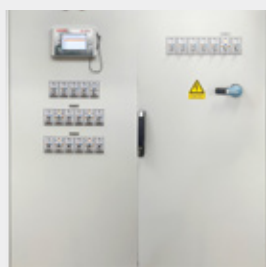
Built-in
web site



Supervisor software

p. 30

CLIMATE



From 1 to 12 climate zones

p. 45

FERTI-IRRIGATION



From 14 to 94 solenoid valves,
up to 2 stations

p. 20

BOILER ROOM



3 boilers
3 transports
Open-Buffer

Display supports for your regulator

FUNCTIONS	REGULATOR SCREEN	EMBEDDED WEBSITE	MONITORING
Real time sensor / probe data	X	X	X
Set point display / update	X	X	X
Alarm display and reset	X	X	X
Statistics display	Min / max value/ daily average	Min / max value/ daily average	Tables / charts
Event / alarm archival	1 month	1 month	Unlimited
Parameter import / export	-	X	X
Remote access (PC, smartphone, tablet)	-	X (subject to conditions)	X (subject to conditions)
Data extraction	-	-	X
Custom window creation	-	-	X

Regulators with an embedded web site



POLYRAMPE



POLYPROG 12



POLYCLIM NG



ARTIC



KAIROS



NERO

Regulator screen

194 W/m² 17945 L 23 km/h 52° (NO) 24.6 °C 07:16 14:12:54 05/09/2016

>> Zone 1 : Consignes / Consignes Principales

Réf.	Description	Valeur	Unité
AA01	Aération 1 : Consigne principale	25.0	°C
AA01	Aération 2 : Consigne principale	25.0	°C
AB01	Chauffage TOR 1 : Consigne principale	19.0	°C
AC01	Chauffage V3V 1 : Consigne principale	19.0	°C
AC02	Chauffage V3V 1 : Consigne d'eau minimum	55.0	°C
AC03	Chauffage V3V 1 : Consigne d'eau maximum	85.0	°C
AC04	Chauffage V3V 1 : Ecart stop chauffage	2.0	°C
AD01	Ecran 1 : Consigne d'ombrage	300	W/m²

693 W/m² 42578 L 11 km/h 265° (E) 35.3 °C 07:17 16:06:25 06/09/2016

>> Zone 2 : Statistiques

Période 1 Période 2 Période 3 Période 4

Sonde	Mini	Maxi	Moy.	Unité
Température ambiante	25.6	26.8	26.2	°C
Hygrométrie ambiante	81	81	81	%
Température sol 1	26.8	26.8	26.8	°C
Température sol 2	40.4	40.5	40.5	°C
Température eau 1	40.5	40.5	40.5	°C
Température eau 2	40.5	40.6	40.6	°C
Température eau 3	40.6	40.6	40.6	°C

Mardi 06/09/2016

Embedded website

ARTIC

Zones : TOMATES / Consignes / Consignes Principales

Réf.	Description	Valeur	Unité
AA01	Aération PATRICE : Consigne principale	18.0	°C
AB01	Chauffage Thermost. 1 : Consigne principale	18.0	°C
AC01	Chauffage BT : Consigne principale	19.0	°C
AC02	Chauffage BT : Consigne d'eau minimum	55.0	°C
AC03	Chauffage BT : Consigne d'eau maximum	85.0	°C
AC04	Chauffage BT : Ecart stop chauffage	2.0	°C
AD01	Ombrage : Consigne principale	75	%
AE01	Ombrage : Consigne température	18.0	°C
AF01	Brasserie : Consigne température	30.0	°C
AF02	Brasserie : Consigne hygrométrie	90	%
AG01	Prog. : Consigne température	30.0	°C
AG02	Prog. : Consigne hygrométrie	NON	%
AG03	Prog. : Consigne hygrométrie	90	%
AG04	Prog. : Consigne température	NON	°C
AJ01	CO2 : Consigne d'injection	1500	ppm

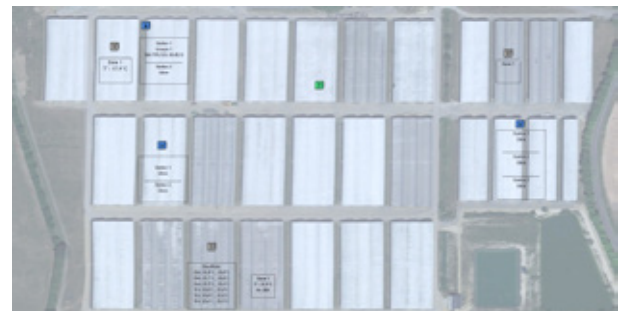
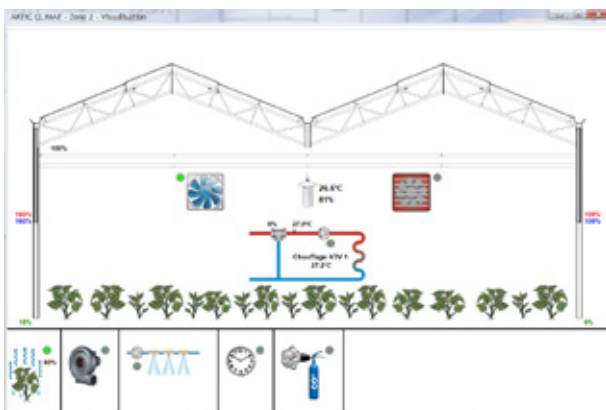
ARTIC

Zones : TOMATES / Statistiques

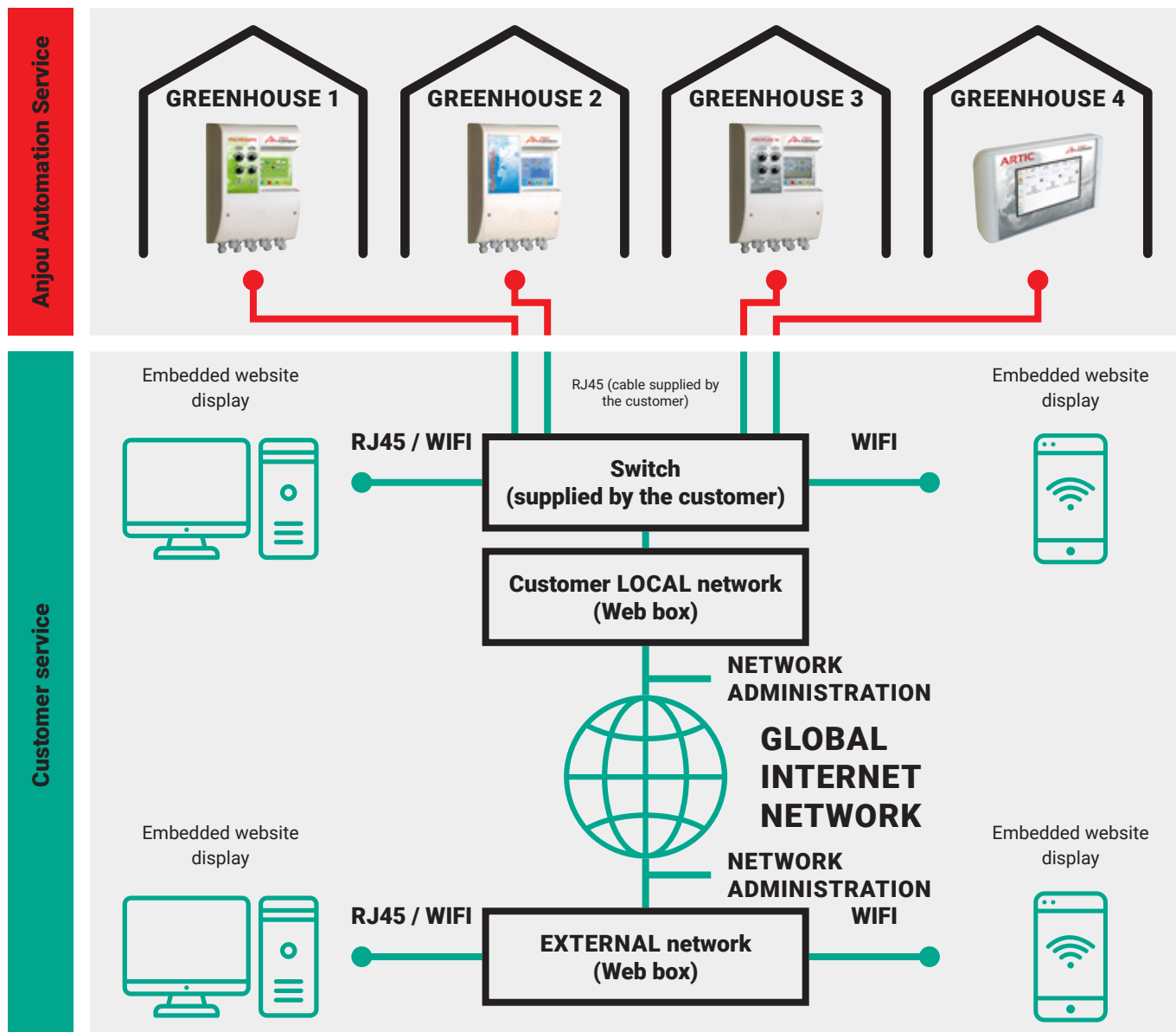
Date courante 22/10/2011

Sonde	Mini	Maxi	Moy.	Unité
Température ambiante	25.6	26.8	26.2	°C
Hygrométrie ambiante	81	81	81	%
Température sol 1	26.8	26.8	26.8	°C
Température sol 2	40.4	40.5	40.5	°C
Température eau 1	40.5	40.5	40.5	°C
Température eau 2	40.5	40.6	40.6	°C
Température eau 3	40.6	40.6	40.6	°C
CO2	4050	4050	4050	ppm

Monitoring software



Synoptic remote access embedded website



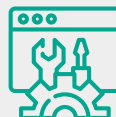
TUTORIAL USING AN ANJOU 4G MODEM

Step 1: SIM card



M2M Subscription
(see prerequisites)

Step 2: Setting



4G modem configuration using the
SIM card (see regulator doc)

Step 3: Open VPN



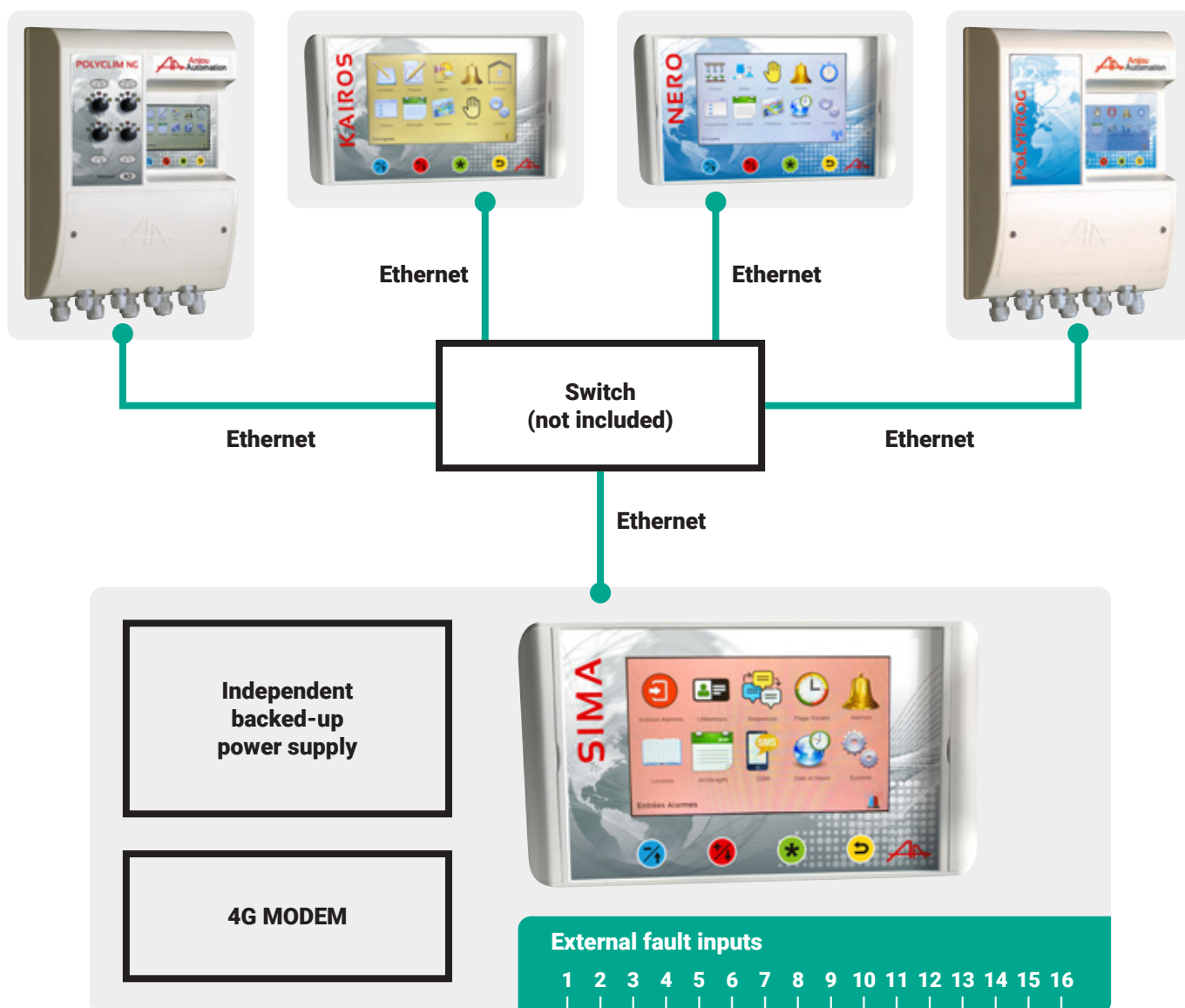
Installation on PC / Smartphone / Open VPN
tablet (free)

Step 4: Customer file



Open VPN configuration using the
customer file supplied by Anjou
Automation

SIMA: STAND-ALONE ALARM SYSTEM + 4G ACCESS



DESCRIPTION

- Separate box from the regulators and programmers
- SIMA configuration on colour touch screen and embedded website
- Issue of text messages from the Alarm contact of connected regulators
- Possibility of connecting 48 external faults (thermostat, level measurement, circuit breaker, etc.)
- 4G access to the connected regulator embedded websites
- Up to 10 users
- Priority management
- Up to 11 sequences

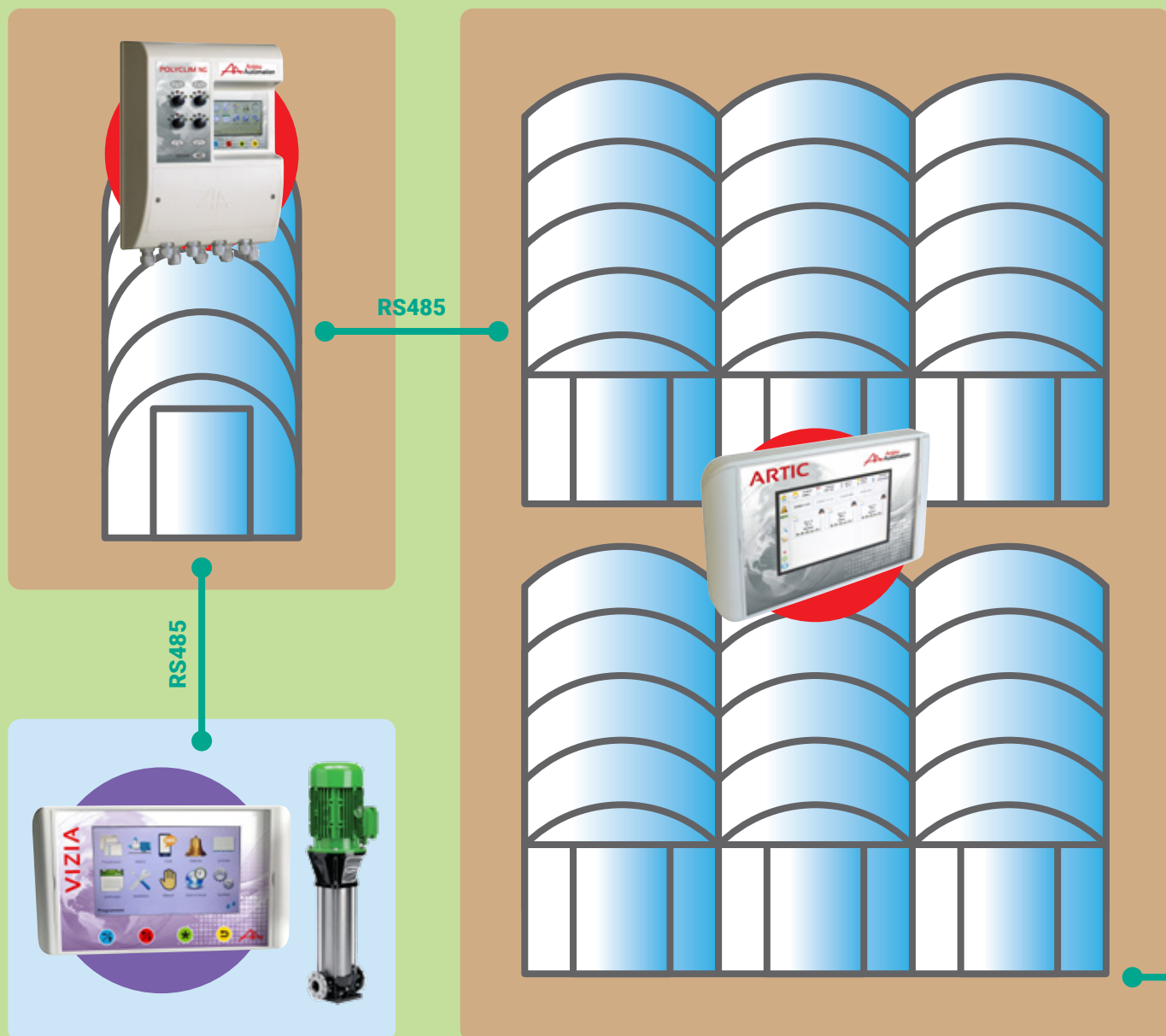
REFERENCES

SIMA box
CL11680

2-year subscription to a secure 4G connection
CL11662

16 fault input module
CL11681

48 faults maximum



SENTINELLE

Sentinelle is a communication gateway between the regulator networks (POLYCLIM, KAIROS, POLYRAMPE, ARTIC, NERO, VIZIA and POLYPROG 12) and the Ethernet office computer network. In addition, it provides:

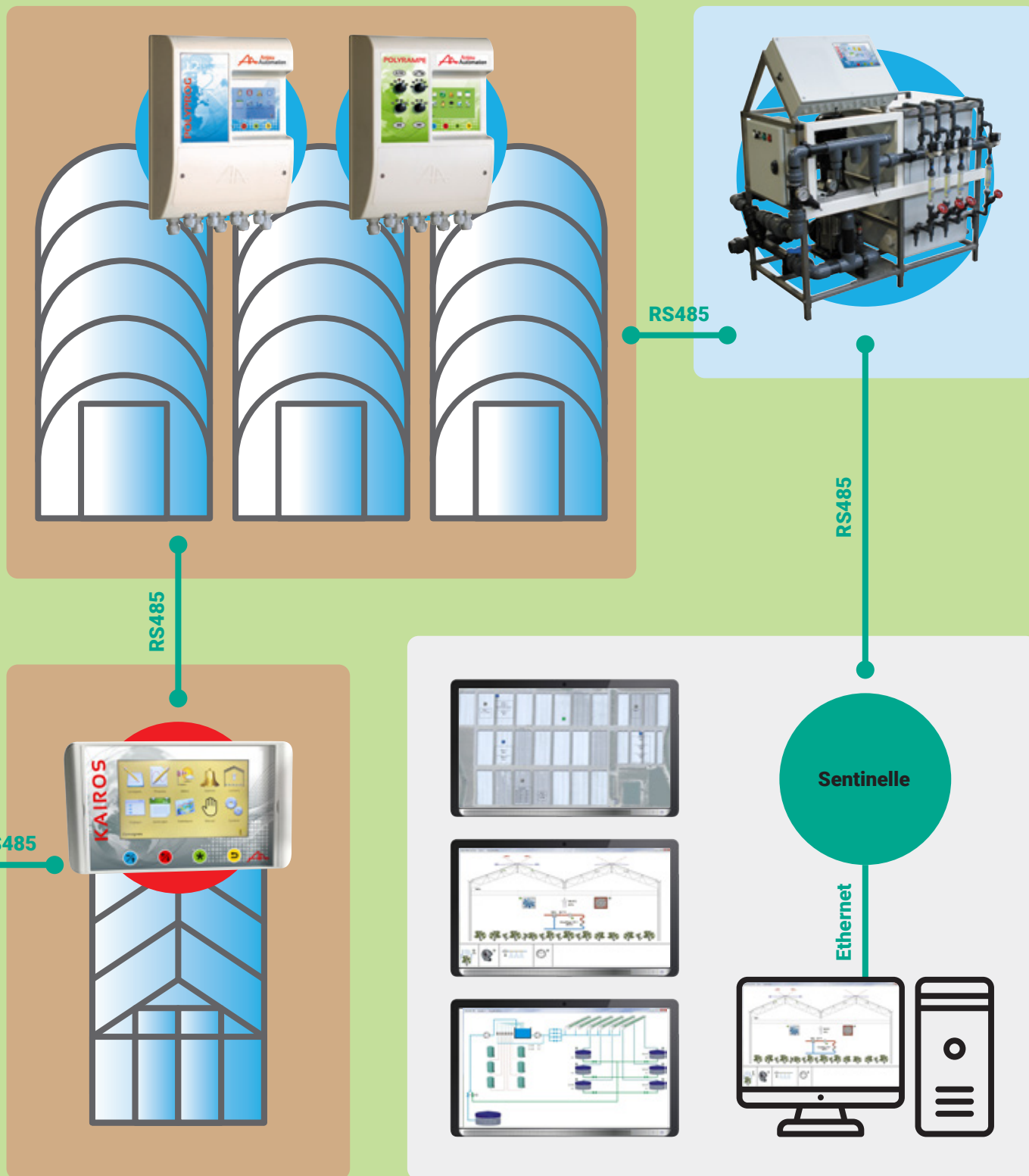
- The collection of all the settings and data from the connected regulators.
- The archival of this data locally on an SD card (without a connected computer)
- As an option: Alarm management by sending SMS messages

MONITORING SOFTWARE

The 4G Monitoring Software (climate and irrigation) enables:

- A real time overview of the installation. The latter can be customised for each site.
- The display and modification of the settings for the connected regulators.
- The real time viewing of the measurements from the different sensors, the regulations statuses, etc. in summary or table format...
- The use of the data recorded by Sentinelle (measurements, events) in the form of graphs, chronograms or tables.
- The creation and use of windows allowing the display and update of the most commonly used settings.
- Settings backup and restore.
- Settings copies.
- Multi-user management.
- As an option: the alarm system settings.

MONITORING SYNOPTIC



SUPERVISION

SENTINELLE BOX

SENTINELLE + supervision software
CLI1690

SMS ALARM FOR SENTINELLE OPTION

SMS alarm for SENTINELLE option
CLI1663

INSIDE SENSORS

AMBIENT TEMPERATURE, HUMIDITY AND COMBINED SENSOR

Ambient temperature sensor, type NTC 5kOhms
CAP0001

Ambient temperature sensor type 4-20 mA
CAP0010

Relative humidity sensor, 4 / 20 mA output
CAP0004

Ambient temperature + humidity sensor, PT 100 / 2 x 4-20mA type
CAP0024



WATER PROBE

Water temperature probe, type CTN 5kOhms
CAP0003

Water temperature applise probe, type CTN 5kOhms
CAP0003.A

Water temperature probe, type PT 100 / 4-20 mA
CAP0012

Water temperature applise probe, type PT 100 / 4-20 mA
CAP0012.A



CAP0003.A



CAP0003

POT / SOIL PROBE

Pot / soil probe, type CTN 5kOhms
CAP0002

Pot / soil probe, type PT 100 / 4-20 mA
CAP0011



CO² SENSOR

- Range 0 - 5000 ppm
- 4-20 mA output
- For use in greenhouses or breeding farms

CAP0040



CERBERE MODULE

- Inclinator in watertight enclosure for accurate and reliable measurement of greenhouse vent opening angles. Secured rapidly by 2 screws directly to the vent structure – no adjustment, no wear. Replaces copy potentiometers. 2-wire 4-20 mA output signal (others on request). Adjustable measurement range - 55° to +55°

4/20 mA output
CAP0060



SUNLIGHT & LUMINOSITY SENSOR

Watt/m² sunlight sensor

- Range 0-1500 W/m², 4/20 mA output

CAP0013

Luminosity (lux) sensor

- Range 0-100 KLux, 4/20 mA output

CAP0017

Watt/m² + Lux sensor - 2 x 4/20 mA outputs

- Range 0-1500 W/m² / 0-100 KLux

CAP0018



WIND VANE SENSOR

- Wind vane sensor, 2 directions

CAP0022

- 0-360° wind vane, 4/20 mA output

CAP0025



INCLINED RAIN SENSOR

- Rain sensor, carbon cell, 1 dry contact (0.5 A under 24 V)

CAP0030



WIND SENSOR

- Wind speed sensor, 2-wire frequency output

CAP0021



RAIN GAUGE

- Mesures rainfall in mm
- Accuracy of 0,2 mm
- Dry contact output

CAP0026



Custom cabinet

Thanks to an equipped wiring workshop, Anjou Automation is capable of meeting your specific electric cabinet requirements for sectors such as:

- **Greenhouse climatic management**
- **Agricultural irrigation**
- **Drainage**
- **Miscellaneous automation**

From creating the wiring diagram to wiring the cabinet, we propose a turnkey solution for your electric project

Compliant with applicable standards, our cabinets can be delivered with one of our regulators embedded in the facade.

Please contact us directly for any request for information or quotations



C1MA

SINGLE-MOTOR AUTOMATIC MODE POWER UNIT

- Unit providing power interface for control of 1 ventilation motor or screen
- Inversor contactor + circuit breaker, limit switch management
- 24 VAC control unit
- Power: 400 V, 3-phase (others on request)

C1MA 1/1,6A

PUI0001

C1MA 0,6/1A

PUI3003



C1MA / SA

SINGLE-MOTOR MANUAL MODE UNIT

- Unit providing power interface for local control of 1 motor
- Inversor contactor + circuit breaker, limit switch management
- Control in local mode only: Open / Off / Close
- Power: 400 V, 3-phase (others on request)

C1MA / SA 1/1,6A

PUI0004

C1MA / SA 0,6/1A

PUI3013



C1MA / SA / AUTO

SINGLE-MOTOR MANUAL AND AUTOMATIC MODE UNIT

- Unit providing power interface for control of 1 ventilation motor or screen in local switched mode or remotely (as for C1MA).
- Inversor contactor + circuit breaker, limit switch management
- 24 VAC remote control unit
- Power: 400 V, 3-phase (others on request)

C1MA / SA / AUTO 1/1,6A

PUI0005

C1MA / SA / AUTO 0,6/1A

PUI3023



C1MCE MANU

CE CERTIFIED POWER BOX : 1 MANUAL MODE MOTOR

- Unit providing power interface for control of 1 ventilation motor or screen
- Inversor contactor + circuit breaker, limit switch management, signal output for advisement of movement
- Local command only : OPEN / CLOSE / STOP
- Certification for rule 2006/42/CE

**C1MCE MANU 1-1,6A
PUI0866**

**C1MCE MANU 0,6-1A
PUI0865**



C1MCE AUTO

CE CERTIFIED POWER BOX : 1 AUTOMATIC MODE MOTOR

- Unit providing power interface for control of 1 ventilation motor or screen
- Inversor contactor + circuit breaker, limit switch management, signal output for advisement of movement
- Local command only : OPEN / CLOSE / STOP / AUTO
- Certification for rule 2006/42/CE

**C1MCE AUTO 1-1,6A
PUI0817**

**C1MCE AUTO 0,6-1A
PUI0816**



3WV + PUMP

POWER INTERFACE CONTROL BOX FOR A CIRCULATION PUMP AND A 3-WAY VALVE

- Power interface control box for a circulation pump and a 3-way valve
- Pump controlled by circuit-breaker + contactor, 3-way valve output either 24VAC or 230VAC. 2 selectors for manual / automatic commands
- Automatic command input using a dry contact, 24VDC or 24VAC

**3WV + PUMP
PUI0009**



C1M C

INTERFACE UNIT FOR 1 HOT AIR GENERATOR

- Unit providing power interface between heating control and heater
- Connected in place of thermostat
- 24 VAC remote control only - Dry contact relay output

**C1MC
PUI0003**



AABFR SINGLE OR THREE-PHASE

SIMPLIFIED INFLATION MANAGEMENT FOR SINGLE OR THREE-PHASE INFLATION TURBINE

- AABFR single or three-phase: simplified inflation management for single or three-phase inflation turbine
- Built-in circulator circuit breaker and contactor
- Adjustable pulses and intervals
- Integrated manual operation

**MONO 230VAC
CLI0906**

**TRI + N 400VAC 0,4/0,6A
CLI0905**



C1M G

POWER UNIT FOR 1 INFLATION TURBINE

- Unit providing power interface for control of inflation turbine
- Contactor + circuit breaker
- Low-voltage, 24 VAC control unit
- Power: 400 V, 3-phase (others on request)

**C1MG 0,4/0,6A
PUI0002**

**C1MG 0,25/0,4A
PUI3031**



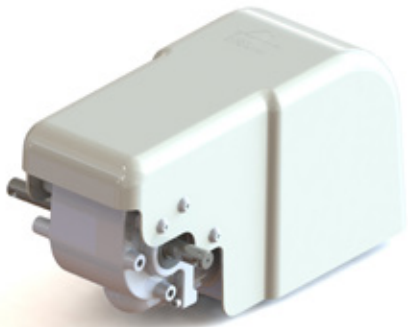
NEW GEAR MOTOR

7 years after the launch of the Mechanisation range at ANJOU AUTOMATION it is being upgraded!

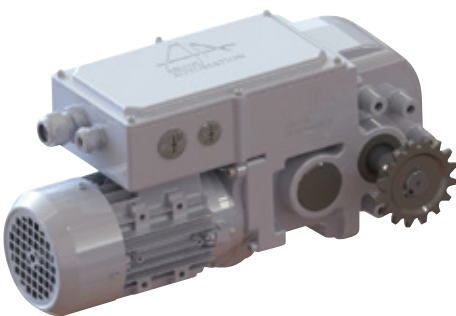
With this new range of gear motors, we take into account the complete installation and connection environment for gear motors in green houses. Indeed, the new gear motor is lighter and more compact which makes it easier to install. The electric connection is also simplified with a common location for the motor and limit switch terminals.

We are keeping the proven principles of the existing range with our patented limit switch system and our white protective cover for outdoor assemblies.

Roll-up version



Opening version



NEW GEAR MOTOR

ROLL-UP VERSION

Torque:	160 NM
Rotation speed:	5 RPM
Power:	0.25 kW
Current at 3 x 400V / 50HZ	
3 x 460V / 60HZ:	0.7A
Current at 3 x 230V / 50HZ	
3 x 280V / 60HZ:	1.2A
Weight:	15 Kg

OPENING VERSION

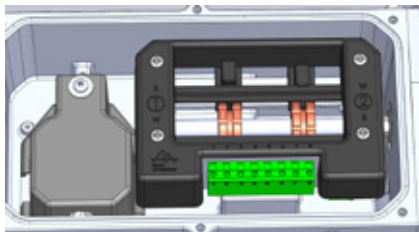
SLOW OPENING

Torque:	240 NM
Rotation speed:	2.8 RPM
Power:	0.25 kW
Current at 3 x 400V / 50HZ	
3 x 460V / 60HZ:	0.7A
Current at 3 x 230V / 50HZ	
3 x 280V / 60HZ:	1.2A
Weight:	15 Kg

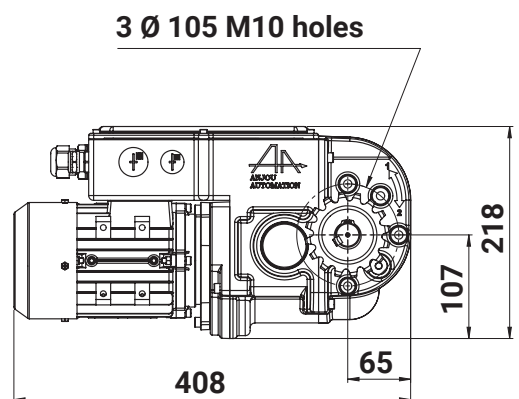
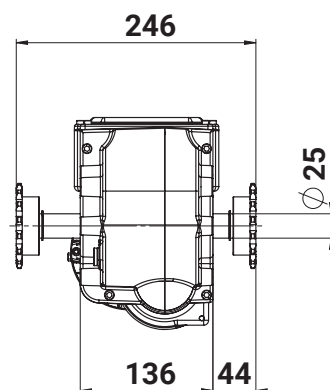
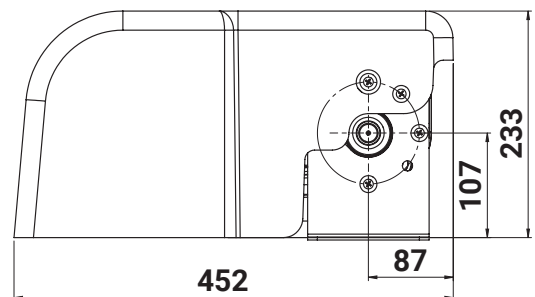
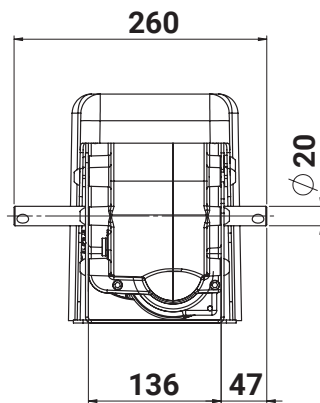
FAST OPENING

Torque:	160 NM
Rotation speed:	5 RPM
Power:	0.25 kW
Current at 3 x 400V / 50HZ	
3 x 460V / 60HZ:	0.7A
Current at 3 x 230V / 50HZ	
3 x 280V / 60HZ:	1.2A
Weight:	15 Kg

Available from the 2nd half of 2023



Patented limit switch system



BENEFITS:

- Gear motor fixed at 360°
- Gear motor sold with its fixing plate
- Centralised power and limit switch connection
- Leak tight construction in aluminium casing
- Non reversible under load
- Manual backup operation on electric motor
- Tool-free leak tight adjustable limit switch
- Phase inversion check (If MISSI option)
- ABS external casing
- Stainless steel output shaft
- Silent running
- Housing provided to add the MISSI AA line



Manual gears for roll-up ventilation

A line of reducing gear to mechanise all your roll-up ventilation on your tunnel and multi-span greenhouses. This reducing gear can be operated manually or using a hand-held power tool (not included).

DESCRIPTION:

- Non reversible transmission under load
- Sealed motor on bearings in a white lacquered aluminium casing with top-up lubrication
- Stainless steel drive shaft
- Manual operation using a crank handle (depending on the model)
- Operation using a hand-held power tool (depending on the model)

ROLLING WITH TELESCOPIC ARM

Position : static
Input shaft Ø for : 20mm
Output shaft Ø for : telescopic arm MEC0001 to MEC0008

Reduction : 1/8

Manœuvre : Handle
Max winding length Ø32 : 75m
Max winding length Ø60 : 50m

MEC0100

Reduction : 1/16

Manœuvre : Handle
Max winding length Ø32 : 90m
Max winding length Ø60 : 65m

MEC0101

Reduction : 1/23

Manœuvre : Screwer H17
Max winding length Ø32 : 140m
Max winding length Ø60 : 90m

MEC0105



DIRECT ROLLING ON A CART

Reduction : 1/23

Manœuvre : screwdriver 18V 400tr/mn max or Brace
Position : mobile
Input shaft Ø for : For 1" tube
Output shaft Ø for : tube 1"
Max winding length Ø32 : 100m
Max winding length Ø60 : 55m

MEC0160



DIRECT ROLLING ROUND TUBE

Manœuvre : Handle
Position : mobile
Input shaft Ø for : 26mm

Reduction : 1/8

Output shaft Ø for : tube 1"
Max winding length Ø32 : 75m
Max winding length Ø60 : 50m

MEC0120

Reduction : 1/16

Output shaft Ø for : tube 1"
Max winding length Ø32 : 90m
Max winding length Ø60 : 65m

MEC0121

Reduction : 1/23

Output shaft Ø for : tube 1"
Max winding length Ø32 : 140m
Max winding length Ø60 : 90m

MEC0125



DIRECT ROLLING SQUARE TUBE

Reduction : 1/8

Input shaft Ø for : 21,5 x 21,5mm
Output shaft Ø for :
tube 25 x 25 x 1,5mm
Max winding length Ø32 : 75m
Max winding length Ø60 : 50m

MEC0122

Reduction : 1/8

Input shaft Ø for : 20,5 x 20,5mm
Output shaft Ø for : tube 25 x 25 x 2mm
Max winding length Ø32 : 75m
Max winding length Ø60 : 50m

MEC0123

Reduction : 1/16

Input shaft Ø for : 20,5 x 20,5mm
Output shaft Ø for : tube 25 x 25 x 2mm
Max winding length Ø32 : 90m
Max winding length Ø60 : 65m

MEC0124

Reduction : 1/23

Input shaft Ø for : 20,5 x 20,5mm
Output shaft Ø for : tube 25 x 25 x 2mm
Max winding length Ø32 : 140m
Max winding length Ø60 : 90m

MEC0126



FACADE ROLLING

Reduction : 1/4
 Manœuvre : Handle
 Position : mobile
 Output shaft Ø for : tube 1" et tube 25 x 25 x 1,5mm
 Max winding lenght Ø60 : 75m

MEC0140



Input shaft Ø for : Built-in crankshaft

Max rolling height : 0,8m
MEC0144

Input shaft Ø for : Built-in crankshaft

Max rolling height : 2,5m
MEC0141

Input shaft Ø for : Built-in crankshaft

Max rolling height : 3,5m
MEC0142

Input shaft Ø for : Built-in crankshaft

Max rolling height : 4,3m
MEC0143



SPREADER

Reduction : 1/23
 Position : static

Manœuvre : ratchet handle

MEC0102

Manœuvre : -

MEC0152



HALF MOON AND GUILLOTINE VENTILATION. HATCH AND FOOD CHAIN (BREEDING)

Reduction : 1/23

Manœuvre : ratchet handle

Position : static

Input shaft Ø for : Fitted with a hook

Output shaft Ø for : tube 1"

Max winding lenght Ø32 : 100m

Max winding lenght Ø60 : 55m

MEC0103

MEC0104



ANGLE TRANSMISSION

Reduction : 1/1

Position : static

Input shaft Ø for : junction tube 1"

Rotation direction : right

Output shaft Ø for : telescopic arm

MEC0300

Rotation direction : left

Output shaft Ø for : telescopic arm

MEC0302



Rotation direction : right

Output shaft Ø for : tube 1"

MEC0301

Rotation direction : left

Output shaft Ø for : tube 1"

MEC0303



MANUAL GEARS ACCESSORIES

CRANK

Type : Brace
Extremity : tubular for 1" tube"
For reducer :
MEC0120/0121/0123/0160
Size : size 0,45m
MEC0203



Type : Brace
Extremity : tubular for tube tube
25x25x1,5
For reducer : MEC0122
Size : size 0,45m
MEC0207



Type : Handle
Extremity : Fitted with a hook
For reducer : MEC0102/0103/0104

Size : size Handle 1,10m
MEC0210

Size : size Handle 1,50m
MEC0211

Size : size Handle 2,00m
MEC0212

Size : size Handle 2,50m
MEC0213



Type : Handle
Extremity : Fitted with a hook
For reducer : MEC0102/0103/0104
Size : size Handle 0,60m
MEC0214



Type : Handle
For reducer :
MEC0102/0103/0104/152/105
MEC0201



Type : Handle
For reducer : MEC0100/101
MEC0202



Type : Ring
For reducer :
MEC0152/0102/0103/0104
MEC0200



SLEEVE

Type : sleeve
For reducer : MEC0001 à MEC0006

Extremity : Ø28
MEC0025

Extremity : Ø26
MEC0027



Type : sleeve
For reducer : MEC0001 à MEC0006

Extremity : 25 x 25 x 1,5
MEC0026

Extremity : 25 x 25 x 2
MEC0035



Type : sleeve
Extremity : Ø60
For reducer : jonction Ø26
MEC0028



Type : sleeve
Extremity : Ø55
For reducer : MEC0141 à MEC0144
MEC0036



Type : sleeve
Extremity : Ø26
For reducer : MEC0120/0121
MEC0130



Type : sleeve
For reducer : MEC0120/0121

Extremity : 25 x 25 x 1,5
MEC0131

Extremity : 25 x 25 x 2
MEC0134



Type : Screwer kit
Extremity : H27
For reducer :
MEC0109/0160/0124/0125/0126
Reducer 1/23
MEC0132



Type : Cart
For reducer : MEC0109
MEC0133

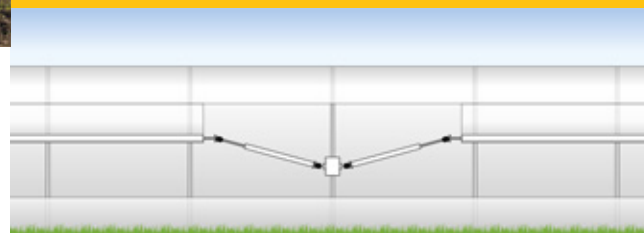


Telescopic arms for roll-up ventilation

ANJOU AUTOMATION proposes that you use this mechanism to make operating your roll-up ventilation on your tunnel and multi-span greenhouses easier. These telescopic arms can be operated manually or automatically depending on your requirements.

DESCRIPTION:

- winding height up to 4.20m,
- Output Stem stainless steel
- Aluminum Tube white lacquered high resistance
- Improved sealing with specific joints
- No sharp corners to preserve your plastics and nets



Max Ø32 single double rolling lenght : 125 m
 Max Ø60 single double rolling lenght : 75 m
 Max Ø60 tube double rolling lenght : 45 m

MEC0001

Max rolling height : 1,40 m
 Length closed : 0,90 m
 Lenght open : 1,10 m

MEC0002

Max rolling height : 2,00 m
 Length closed : 1,10 m
 Lenght open : 1,45 m

MEC0003

Max rolling height : 2,40 m
 Length closed : 1,30 m
 Lenght open : 1,90 m

MEC0004

Max rolling height : 3,20 m
 Length closed : 1,50 m
 Lenght open : 2,40 m

MEC0005

Max rolling height : 3,60 m
 Length closed : 2,10 m
 Lenght open : 2,60 m

MEC0006

Max rolling height : 4,20 m
 Length closed : 2,10 m
 Lenght open : 3,20 m

Drive 2 cones male / female

MEC0030

Entry tip : Round
 Exit tip : Round
 Input shaft Ø for : 20 mm

MEC0031

Entry tip : Flat bar
 Exit tip : Round
 Input shaft Ø for : 20 mm
 Thickness flat bar : 14 mm

MEC0032

Entry tip : Flat bar
 Exit tip : Flat bar
 Thickness flat bar : 14 mm



Motorization for roll-up ventilation

A line of gear motors to mechanise all your roll-up ventilation on your tunnel and multi-span greenhouses using telescopic arms.



DESCRIPTION :

- Sealed construction in aluminium casing
- Non reversible load
- Manual backup operation on electric motor
- No-tool adjustable limit switch
- Phase inversion check (If MISSI option)
- Adjustable 50 rotation stopper stroke
- External ABS casing
- Stainless steel output shaft
- Silent running
- Housing provided to add the MISSI AA line



MEC1218

Torque :	115 NM
Rotation speed :	5 TR/MIN
Max lenght Ø60 mm (alu) :	100 m
Max lenght Ø32 mm (steel) :	100 m
Power :	0,18 kW
Current at 3 x 400V / 50HZ	
3 x 460V / 60HZ :	0,7 A
Current at 3 x 230V / 50HZ	
3 x 280V / 60HZ :	1,2 A
Weight :	23 Kg

MEC1200

Torque :	160 NM
Rotation speed :	5 TR/MIN
Max lenght Ø60 mm (alu) :	150 m
Max lenght Ø32 mm (steel) :	150 m
Power :	0,25 kW
Current at 3 x 400V / 50HZ	
3 x 460V / 60HZ :	0,75 A
Current at 3 x 230V / 50HZ	
3 x 280V / 60HZ :	1,3 A
Weight :	23 Kg

MEC1201

Torque :	100 NM
Rotation speed :	8 TR/MIN
Max lenght Ø60 mm (alu) :	100 m
Max lenght Ø32 mm (steel) :	100 m
Power :	0,25 kW
Current at 3 x 400V / 50HZ	
3 x 460V / 60HZ :	0,75
Current at 3 x 230V / 50HZ	
3 x 280V / 60HZ :	1,3 A
Weight :	23 Kg

CART GEAR MOTORS



DESCRIPTION:

- Non reversible load
- Sealed construction in aluminium casing
- Manual backup operation on electric motor
- No-tool adjustable limit switch
- Adjustable 50 rotation stopper stroke
- External ABS casing
- Stainless steel output shaft
- Silent running



MEC1213

Torque :	160 NM
Rotation speed :	5 TR/MIN
Output shaft :	Tube 1" et 25X25x1,5
Power :	0,25 kW
Current at 3 x 400V / 50HZ	
3 x 460V / 60HZ :	0,75 A
Current at 3 x 230V / 50HZ	
3 x 280V / 60HZ :	1,3 A
Weight :	25 Kg

MEC1211

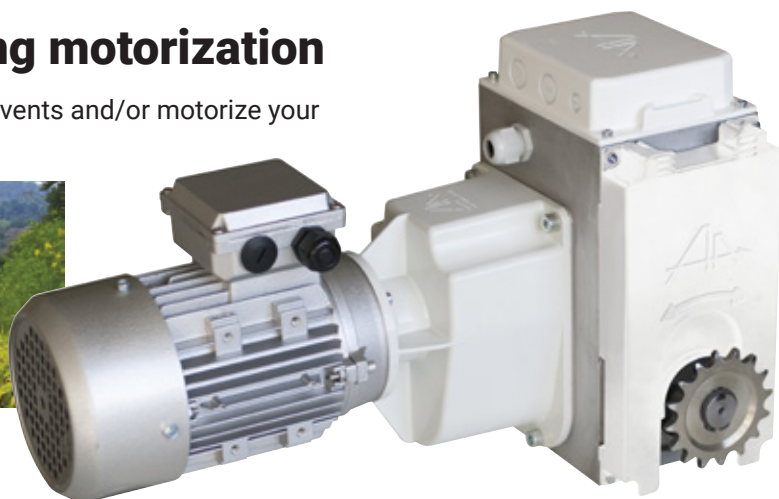
Torque :	160 NM
Rotation speed :	5 TR/MIN
Output shaft :	TUBE 25X25x2
Power :	0,25 kW
Current at 3 x 400V / 50HZ	
3 x 460V / 60HZ :	0,75 A
Current at 3 x 230V / 50HZ	
3 x 280V / 60HZ :	1,3 A
Weight :	25 Kg



RIDGE VENTILATION / SHADING GEARMOTORS / MISSI

Ridge ventilation and shading motorization

A line of gear motors to mechanize all your ridge vents and/or motorize your shading system.



Chain coupling (supplied) : Ø32 or Ø34 mm
Weight : 26 Kg

MEC1400-32/34

Torque :	400 NM
Rotation speed :	2,8 TR/MIN
Power :	0,37 kW
Current at 3 x 400V / 50HZ	
3 x 460V / 60HZ :	1,1 A
Current at 3 x 230V / 50HZ	
3 x 280V / 60HZ :	1,9 A

MEC1401-32/34

Torque :	400 NM
Rotation speed :	1,8 TR/MIN
Power :	0,25 kW
Current at 3 x 400V / 50HZ	
3 x 460V / 60HZ :	0,9 A
Current at 3 x 230V / 50HZ	
3 x 280V / 60HZ :	1,6 A

MEC1402-32/34

Torque :	350 NM
Rotation speed :	5 TR/MIN
Power :	0,55 kW
Current at 3 x 400V / 50HZ	
3 x 460V / 60HZ :	1,5 A
Current at 3 x 230V / 50HZ	
3 x 280V / 60HZ :	2,6 A

MEC1403-32/34

Torque :	250 NM
Rotation speed :	2,8 TR/MIN
Power :	0,25 kW
Current at 3 x 400V / 50HZ	
3 x 460V / 60HZ :	0,75 A
Current at 3 x 230V / 50HZ	
3 x 280V / 60HZ :	1,3 A

MEC1404-32/34

Torque :	200 NM
Rotation speed :	3,6 TR/MIN
Power :	0,25 kW
Current at 3 x 400V / 50HZ	
3 x 460V / 60HZ :	0,9 A
Current at 3 x 230V / 50HZ	
3 x 280V / 60HZ :	1,6 A

MEC1405-32/34

Torque :	550 NM
Rotation speed :	2,8 TR/MIN
Power :	0,55 kW
Current at 3 x 400V / 50HZ	
3 x 460V / 60HZ :	1,5 A
Current at 3 x 230V / 50HZ	
3 x 280V / 60HZ :	2,3 A

MEC1406-32/34

Torque :	240 NM
Rotation speed :	5 TR/MIN
Power :	0,37 kW
Current at 3 x 400V / 50HZ	
3 x 460V / 60HZ :	1,1 A
Current at 3 x 230V / 50HZ	
3 x 280V / 60HZ :	1,9 A

MEC1407-32/34

Torque :	160 NM
Rotation speed :	5 TR/MIN
Power :	0,25 kW
Current at 3 x 400V / 50HZ	
3 x 460V / 60HZ :	0,9 A
Current at 3 x 230V / 50HZ	
3 x 280V / 60HZ :	1,6 A

DESCRIPTION:

- Sealed construction in aluminium casing
- Non reversible load
- Manual backup operation on electric motor
- No-tool adjustable limit switch
- Phase inversion check (If MISSI option)
- 33 rotation working stopper stroke for vents and 100 rotations for shade
- Ø32 or Ø34 tubular chain coupling
- Two possible fixtures: side and back
- Silent running
- Housing provided to add the MISSI AA line

TUBULAR CHAIN COUPLING

Ø32 mm

MEC1100

Ø34 mm

MEC1101



LIMIT SWITCH CASSETTE

MEC1164



MISSI RANGE

- Built into the Anjou Automation gear motor
- Pre-wired between the limit switch and the motor UVW and MISSI terminals

MISSI option
MEC1160



MISSI LS option
MEC1163



MISAMP option
MEC1162

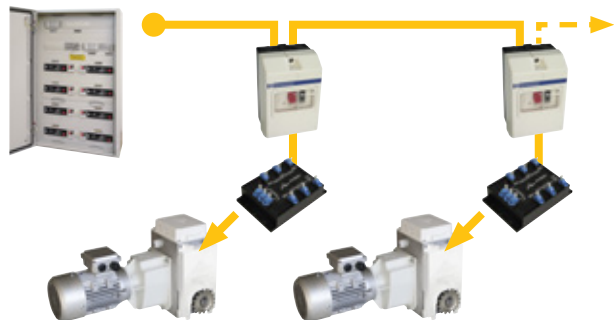
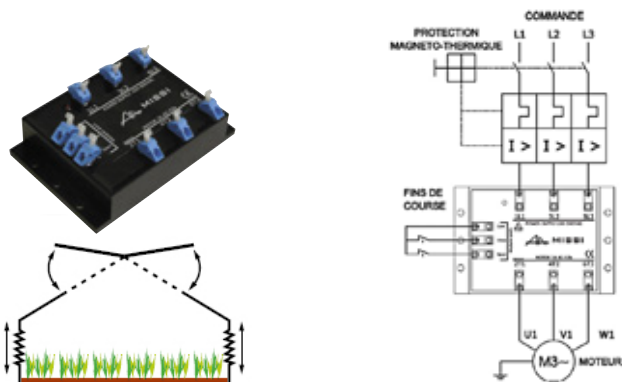


MISSI RANGE

MISSI

- Three phased motor control module controlled by the power line. 200-500V three phased 50-60Hz power supply
- Motor output 3A max category Ac53a. 2 "open - close" limit switch inputs.
- MISSI combines the limit switch inputs with the power supply phase rotation.
- **Elimination of remote control cables, gear motor safety limit switches and phase checking relays.**

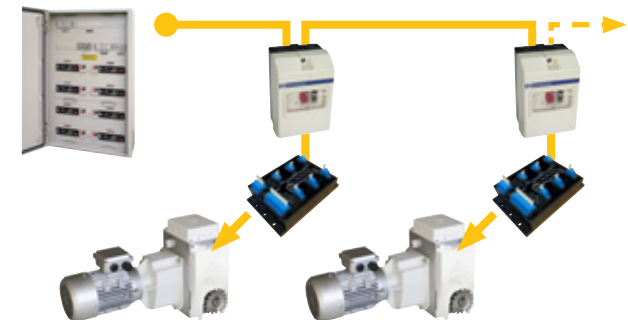
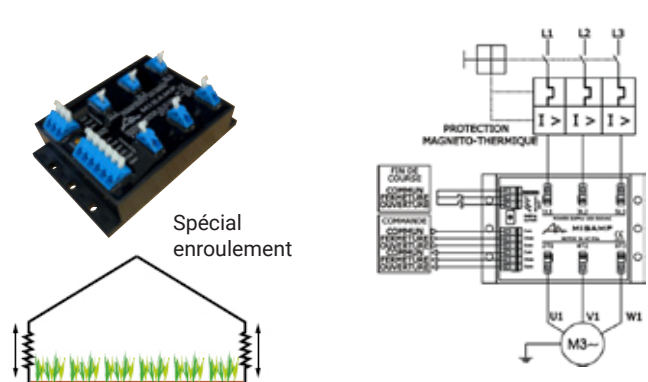
MISSI + circuit breaker in a control box
PUI0708



MISAMP

- Three phased inverter module. 200 - 500V 50-60Hz power supply. Motor output 3A max category Ac53a.
- 24Vac remote control on 3 wires (common, open, close)
- Fitted with a current check on the motor line, it can cut the control if there is an overload (winder jam,...).
- 2 "open - close" limit switch inputs
- **It can eliminate the winder motor limit switches (depending on the installation configuration).**

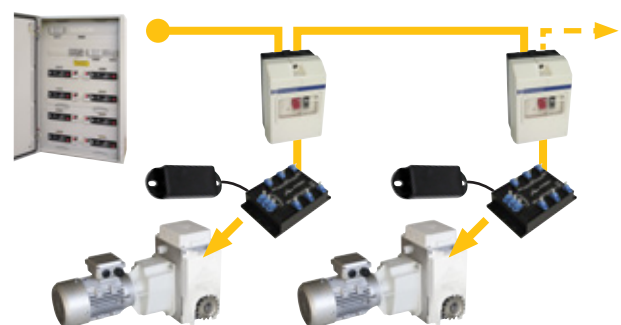
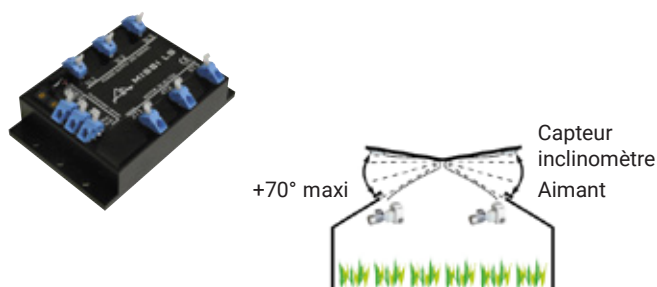
MISAMP only
PUI0500



MISSI LS

- Three phased motor control module controlled by the power line. 200-500V three phased 50-60Hz power supply
- Motor output 3A max category Ac53a. 2 inputs for an inclinometer sensor with magnetic detection for "limit switch" management.
- MISSI LS combines the values measured by the inclinometer sensor with the power supply phase rotation.
- The "open limit switch" is set using 2 rotating switches (100 possible positions) to set the maximum angular position.
- The "close limit switch" is set by adjusting the magnet position on the greenhouse frame.
- **Elimination of remote control cables, gear motor limit switches and phase checking relays.**

MISSI LS + magnet + sensor in a control box
PUI0707



IRRIGATION CART MANAGEMENT

POLYRAMPE

- 230V power supply
- Up to 10 solenoid outputs
- 0-100% speed adjustment
- Front, back and safety limit switch input
- Metering input (sectorisation) encoder / plot
- Variable drive fault input
- Manual mode using the switches on the front
- 1 communication bus to the variable drive
- 1 Ethernet port
- 1 embedded web site for programming and manual mode from a mobile support

PRO0270



ONLY COMPATIBLE WITH THE VARIABLE DRIVE BOX BELOW

VARIABLE DRIVE BOX

- 1 main switch 2 x 10
- 1 N+6A circuit breaker
- 1 ATV12 0.37kW variable drive
- 1 Marked connection terminal block
- 1 set of cable glands

Box to be installed next to the irrigation cart motor

PRO0271



NANORAMPE NG

- 4 speeds available for moving the watering boom
- Control of a watering solenoid valve
- Automatic return cycle with watering
- Manual mode (without watering)

PRO0216

Devices intended for the management of watering booms. Controls a three-phase 230V motor to move the boom.

SELECTION GUIDE

ANJOU AUTOMATION proposes several ranges of programmers and watering computers for professional use. All these products have been developed on the basis of producers' requirements.

POLYPROG 12

- 12 to 48 channel electronic programmers
- Color-touch screen
- Upgraded manual function
- Time or percentage irrigation
- Embedded website



Applications: greenhouses, hydroponic culture, fertiliser injection and EC/pH monitoring, technical applications

MICROFERTI

- Controller for simplified fertilisation management, 3 fertilisers and 1 acid, EC and pH monitoring, alarms.
- Very easy to use.



Applications: greenhouses, hydroponic culture, fertiliser injection and EC/pH monitoring, technical applications

NERO

- 6- to 96-channel computer
- "Super programmer" or "Irri-Ferti station" version
- Compact and user-friendly (large graphic screen)
- 6 fertilisers and 40 groups
- Switch on each channel, remotable modules, time or volume management, integrated reports,
- SENTINELLE compatible



Applications: greenhouses, hydroponic culture, fertiliser injection and EC/pH monitoring, technical applications

ANJOU FERTIL DIRECT

- Anjou Fertil is a direct injection station (venturi), using the network pressure, with flow rates ranging from 3 to 20 m³/h.

Available in four versions:

- 3 up to 6 m³/hr
- 6 up to 9 m³/hr
- 9 up to 15 m³/hr
- 15 up to 20 m³/hr



ANJOU FERTIL BAC DE MELANGE

- The ANJOU FERTIL mixing tank station is an injection power station with a venturi and mixing tank system, for flow rates from 2 to 30m³/hr.



ANJOU FERTIL BYPASS

- ANJOU FERTIL BY PASS STATION: Direct injection system especially adapted to high flow rates (20 to 100m³/h).

Available in version:

- 3 to 100m³/hr. Consult us.



POLYPROG 12 - MICROFERTI

POLYPROG 12

- 12 standard solenoid valves with extension possible up to 48
- Pump/motor relay control.
- Possibility of managing 8 extra pumps
- 12 irrigation groups
- 3 irrigation stations available
- 1 pause input to suspend irrigation
- Management of a Solar meter
- 6 analogue inputs: 3 temperature and 3 hygrometry / tensiometer
- Management of 3 dry contact inputs
- Up to 12 valves operated simultaneously
- Manual start up of a group
- Independent time per valve

- Setting of valve times to the second
- Sequential programming
- Filling, irrigation and rinsing step.
- Group start up modes:
 - Set time
 - Cyclical
 - Calendar
 - Solar meter
 - Dry contact
 - Analogue
 - Safety

PRO1280



EXTENSION POLYPROG 12

1st extension module -12 channels, relay output to switch from 12 to 24 channels, supplied in a box with a 24Vac transformer

PRO1220

Following extension module, 12 channel relay outputs (maximum 48 channels per POLYPROG 12 programmer)

PRO1221

Control module - 8 motors / fertilisation channels

PRO1222

MICROFERTI

MICROFERTI : BOWED CONTROLLER FOR SIMPLIFIED FERTILIZATION CONTROL

- Control of 3 fertilizers and 1 acid with EC and pH sensors (Venturi version)
- Control starting on 2 ON/OFF inputs (2 groups of set points)
- Control of EC/pH alarms : one alarm relay
- 1 pump relay output
- Digital calibration of the EC/pH sensors. An easy device to use, especially suitable for small installations.
- Fully equipped box + EC/pH transmitters + EC sensor + pH sensor

MicroFerti

PRO1020

0-10V interface for controlling 2 variable speed metering pumps

PRO1003

Option : Solar meter, change in EC in relation to sunshine (CAP0013)



ANJOU FERTIL DIRECT

STATION OF DIRECT INJECTION FERTILIZERS / ACID

ANJOU FERTIL station is a central injection of fertilizer / acid for the conduct of the fertilization in hydroponic culture. Venturi-based technology, it uses the pressure of the existing network and allows flow rates ranging from 3 to 20m³ /h. It has two basic lines of injection (fertilizer or acid) and locations for 2 additional lines are available. ANJOU FERTIL can host MICROFERTI or OSCAR controllers and their probes to ensure control of the conductivity (fertilizer) and pH (acid) effectively. From simple installation and reduced maintenance, ANJOU FERTIL comes in 4 versions depending on the flow capacity of the installation:

- 3 to 6 m³/h
- 6 to 9 m³/h
- 9 to 15 m³/h
- 15 to 20 m³/h

Direct station 3-6 m³/h, 2 lines of injection (without controller)
STD0001

Direct station 6-9 m³/h, 2 lines of injection (without controller)
STD0002

Direct station 9-15 m³/h, 2 lines of injection (without controller)
STD0003

Line of additional injection
STD0010

Suction strainer
STD0015



AnjouFertil
Direct →

ANJOU FERTIL BAC DE MÉLANGE

FERTILISER / ACID INJECTION STATION WITH MIXING TANK

The ANJOU FERTIL station is a fertiliser / acid injection station for the management of hydroculture crop fertilisation. Based on the Venturi technology and fitted with a 225 litre mixing tank, it allows flow rates from 2 to 30 m³/h. As standard it has 3 injection lines (2 fertiliser + 1 acid) and positions for 2 additional lines are available. ANJOU FERTIL allows the use of the OSCAR controller as well as its probes in order to provide efficient EC (fertiliser) and pH (acid) conductivity regulation. Frame extension for premixing valve and priming pump



AnjouFertil
Bac de mélange →

Contact us

ANJOU FERTIL BY PASS

SPECIAL LARGE FLOW DIRECT INJECTION SYSTEM

The AnjouFertil By-Pass station is a direct injection station specially suited for large flows. ANJOU FERTIL allows the use of the OSCAR controller as well as its probes in order to provide efficient EC (fertiliser) and pH (acid) conductivity

Available in versions:

- From 3 to 100 m³/h. Contact us.



AnjouFertil
By-Pass →

Contact us

NERO

The NERO is a next generation fertilisation-irrigation management computer. An upgrade from the OSCAR, it has kept the use logic while including additional functions.

It has a colour touch screen and an embedded website providing the best browsing and the possibility of monitoring your installation remotely. Compatible with SENTINELLE, the NERO is perfectly adapted to new or refurbishment projects. Its USB port can be used for easy software updates (new version, added function).

In its superprogrammer or fertilisation computer configuration, the NERO can also be directly installed on your fertilisation frames.



FERTILISATION-IRRIGATION

- From 14 to 94 solenoid valves
- Management of up to 4 fertilisation stations (2 standard + 2 optional)
- Management of 8 static outputs for injection lines or 4 0-10V dosing pumps
- Up to 40 irrigation groups

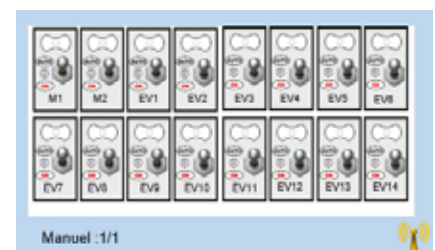
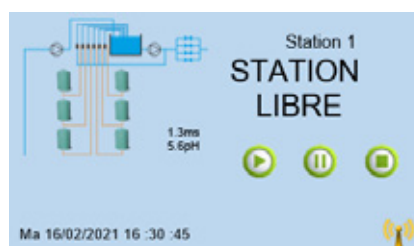
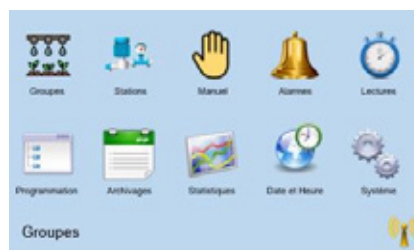
SUPERVISION

- Compatible with SENTINELLE
- Embedded website via 4G access (see page 24-25)

THE ADVANTAGES

- Station status display,
- Easy icon menu and setting access
- Value entry using a numeric keypad
- Setting backup and restore using the embedded website
- Software and configuration upgrades using a basic USB thumb drive
- Virtual manual mode: AUTO/0/MANUAL switches for the solenoid valves included on the screen

On its 5 inch colour touch screen, browsing through the NERO settings is fluid. The NERO includes one month of archives (alarms, events, statistics).



NERO: FERTI-IRRIGATION MANAGEMENT

Complete control box for 16 channels (2 motors + 14 valves)
PRO1400



Irri / Ferti station module, 1 board, 8 inputs/ 8 outputs "Venturi version"
PRO1001

Irri / Ferti station module, 1 board, 2 outputs 0 / 10 V (1 acid / 1 fertiliser)
PRO1003

Module with 16 additional channels
PRO1007

8 dry contacts inputs / 8 analogs inputs module
PRO1008

Drainage / pre-mixing module
PRO1015

Soil moisture sensor 4/20 mA
PRO1016

EC sensor, 0-10 mS / cm, screw mounting, excl. Mounting
PRO1011

pH sensor, 0-10, screw mounting, excl. Mounting
PRO1012

Interface EC sensor module, digital calibration
PRO1013

Interface PH sensor module, digital calibration
PRO1014

Paddlewheel Flow Sensors + support DN50
STD0051

FUNCTIONS

- Up to 40 groups
- Control of 6 to 94 valves
- Control of 2 to 18 motors (mastervalue, pump, stirrers, etc)
- Control of 2 stations (standard) + 2 optional
- Simultaneous or sequential valve control
- Watering by time or by volume, valve optimisation module
- Starting at fixed times, cyclically or by date
- EC and pH control:
 - Control of 6 fertilisers + 1 acid in the "venturi" version
 - Or control of up to 3 fertilisers and 1 acid in the "variable speed pump" version
 - Change to the EC according to the solarmeter
- Control of a mixing tank (filling, pre-mixing, and sunlight, draining)
- Alarm management
- Forced operation switches on every output (automatic / 0 / manual)
- Balance module with saving over 4 weeks
- Drainage and pre-mixing options available

NERO: 4G ACCESS

SIMA box
CLI1680

p. 25

2-year subscription to a secure 4G connection
CLI1662

The secure 4G connection makes it possible for you to connect to the embedded NERO web site from outside your installation from any device that has a web browser (PC, tablet and smartphone). Our services fully secure this connection and guarantee the protection of your regulator and your computer system.

Web site view



NERO: ADDITIONAL STATIONS

2 additional stations managed by the NERO
PRO1410

Pumping control cabinets with network flow and pressure regulation

These three devices are used to start up pumping and monitor the network. They inform you of any incident arising on the installation.

- Managed by controller with parameter setting via screen and front panel keypad.
- Extremely user-friendly, easy access to all parameters.
- Integrated link with variable speed drive, parameter adjustment from controller.



MONOPUMP MANAGEMENT

- Pressure management using a variable speed drive control on the pump motor
- Variable flow rate management to stop the pump
- Start using a set point or a remote control using a text message
- Alarm threshold management
- Management of 3 programmes: set points, thresholds, etc

MULTIPUMP MANAGEMENT

- Pressure or flow management using a variable master pump with the addition of 1 to 6 fixed or variable pumps.
- Flow management to trigger and stop the pumps
- Minimum pressure maintained using a Jockey pump
- Other features identical to the Monopump version

GSM MODEM OPTION FOR VARIO'POMPE NG

- Remote start and stop control
- Modification of pressure setpoints
- Reading of the operating status (pressure value, motor data)
- Management of alarms

COMPLETE KIT FOR MONOPUMP MANAGEMENT (VIZIA + VARIABLE SPEED DRIVE + PRESSURE SENSOR + GSM MODEM)

Cabinet 3kW - 7,2A max
APR0100

Cabinet 4kW - 10A max
APR0101

Cabinet 5,5kW - 13A max
APR0102

Cabinet 7,5kW - 16A max
APR0103

Cabinet 11kW - 24A max
APR0104

Cabinet 15kW - 32A max
APR0105

Cabinet 18kW - 37A max
APR0106

Cabinet 22kW - 44A max
APR0107

Cabinet 30kW - 61A max
APR0108

Cabinet 37kW - 73A max
APR0109

Cabinet 45kW - 90A max
APR0110

Cabinet 55kW - 106A max
APR0111

Cabinet 75kW - 147A max
APR0112

Cabinet 90kW - 177A max
APR0113

Cabinet 110kW - 212A max
APR0114

Cabinet 132kW - 260A max
APR0115

Cabinet 160kW - 315A max
APR0116



VIZIA
+



4-20mA pressure sensor
+



GSM modem

+

Variable speed drive
Delivered next to the cabinet
(IP55)



=

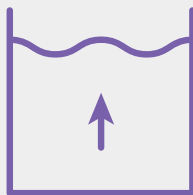


Built into a sheet metal cabinet

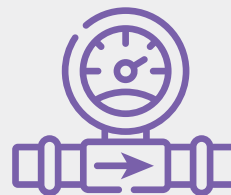
4/20ma
pressure measurement



4/20ma
water height measurement



4/20ma
flow measurement



Program update using
a USB thumb drive



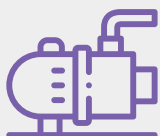
Manual and automatic
start management
Pressure or flow or motor
power stop management



Irrigation management
using a timer
(cover irrigation)



Management of 3
programs that can be
updated locally or remotely



Management of 1 to 7 pumps
(1 to 7 pumps on variable drives)
Management of 1 jockey pump
(fixed or variable)
Management of 1 priming pump



Management of
pressure - flow
level - pump fault, etc. alarms



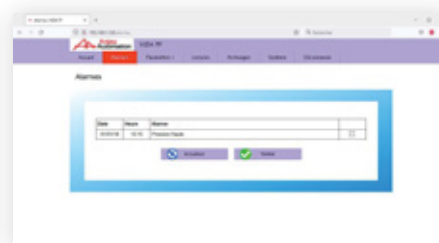
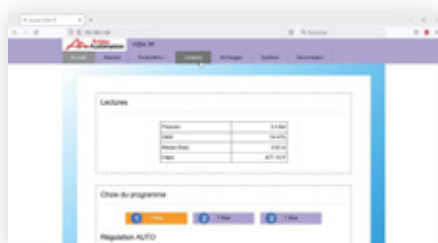
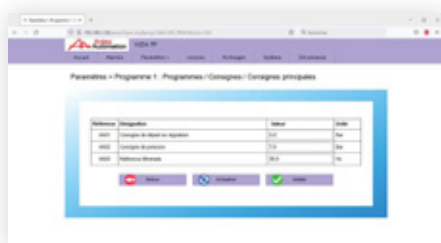
Contact output reporting
level 3 threshold, flow thresholds, alarms,
current program.
RJ45 port to read and backup
settings using an embedded website



Using GSM 3G/4G modem

Start and stop
program change
Alarm reset
Irrigation network and motor
data reading
Management of up to 10 users

- Remote access embedded website option
- Management of all VIZIA settings, configuration backup
- 2-year subscription (M2M SIM card not included) CLI1662



DIRECT / PROGRESSIVE START-UP

PUMP START-UP UNITS POMPY NG



Electromechanical version, 1 to 15 kW, robust build, no electronics

- Voltage surge protection
- AUTO/OFF/MANUAL function
- Remote control input
- Fault display

Options:

- Run-dry
- Flow rate and pressure
- Safety devices
- Gradual starter

DIRECT

POMPY NG 2,2kW - 5A max
IRI0300

POMPY NG 4kW - 9A max
IRI0301

POMPY NG 5,5kW - 12A max
IRI0302

POMPY NG 7,5kW - 16A max
IRI0303

POMPY NG 11kW - 25A max
IRI0304

POMPY NG 15kW - 32A max
IRI0305

PROGRESSIVE

POMPY NGDP 2,2kW - 5A max
IRI0310

POMPY NGDP 4kW - 9A max
IRI0311

POMPY NGDP 5,5kW - 12A max
IRI0312

POMPY NGDP 11kW - 25A max
IRI0313

POMPY NGDP 15kW - 32A max
IRI0314

POMPY OPTIONS

Run-dry detection by electrodes

IRI0330

HP/LP safety timeout

IRI0332

LP filtering timeout

IRI0334

Flow switch unpriming timeout

IRI0336

Clock

IRI0338

Timer

IRI0340

32 A master switch

IRI0342

ACCESSORIES

PRESSURE SWITCHES

- For high or low pressure safety system

Pressure switch 10-30 bars
IRI0070

Pressure switch 4-17 bars
IRI0071

Pressure switch 1-10 bars
IRI0069



PRESSURE SWITCH WITH POINTER

- Weatherproof, moulded aluminium case, diameter 114 mm.
- Measurement display and 2 adjustable thresholds on dial.
- Output on 2 changeover contacts, measuring 0/25 bar.

Pressure switch with pointer 0/25b
IRI0072



ELECTRODE LEVEL GAUGE

- Inox

Electrode level gauge
IRI0085



MICRO START

START-UP ITEM (STATOR / STAR-TRIANGLE)

- Adjustable startup timer
- Adjustable pressurisation time
- High and low pressure safety system management
- Integrated remote control
- LED mimic panel (faults, startup, LP, HP)

Automate Start

IRI0103



ALIM START

400/24VAC POWER SUPPLY UNIT

- Protection by fuse + integrated varistors

Power supply ALST15

IRI0105



CABINETS WITH PROGRESSIVE START-UP

CABINETS WITH PROGRESSIVE START-UP

Cabinet with progressive start-up. Management with an automaton which ensure the HP / BP security. Avoids "water hammers" and prolongs the service life of the facilities

Cabinet with progressive start-up 15kW -32A max
APR0001

Cabinet with progressive start-up 22kW -47A max
APR0002

Cabinet with progressive start-up 30kW -62A max
APR0003

Cabinet with progressive start-up 37kW -75A max
APR0004

Cabinet with progressive start-up 45kW -88A max
APR0005

Cabinet with progressive start-up 55kW -110A max
APR0006

Cabinet with progressive start-up 75kW -140A max
APR0007

Cabinet with progressive start-up 90kW -170A max
APR0008

Cabinet with progressive start-up 110kW -210A max
APR0009

OPTIONS FOR PROGRESSIVE START-UP CABINETS

No-flow shutdown

IRI0049

Voltmeter

IRI0054

Unpriming

IRI0050

40 A differential switch

IRI0056

24-hour timer

IRI0051

63 A differential switch

IRI0057

24-hour clock

IRI0052

Resistor safety device

IRI0058

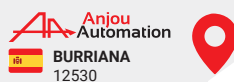
Time counter

IRI0053

Threshold ammeter

IRI0067





880 rue Léo Baekeland - B.P. 57
85290 Mortagne-sur-Sèvre - FRANCE
Tél. 02 51 63 02 82 - Fax 02 51 63 02 83
contact@anjouautomation.fr

www.anjouautomation.com

