

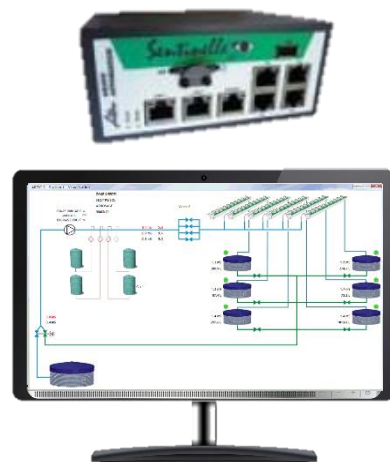
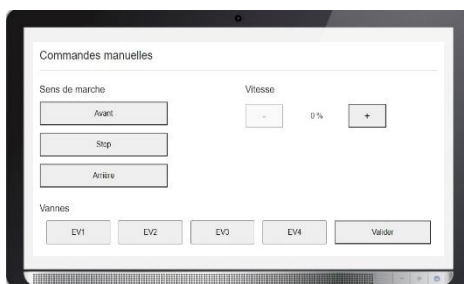
POLYRAMPE



Colour touch screen

Embedded web site:
access via smartphone

Compatible with
existing Supervision



Description

- 230V power supply
- Up to 10 solenoid outputs
- 0-100% speed regulation
- Front, back and safety limit switch input
- Metering input (sectorisation) encoder / plot
- Variable drive fault input
- Manual mode using the switches on the front
- 1 communication bus to the variable drive
- 1 Ethernet port
- 1 embedded web site for programming and manual mode from a mobile support

Variable drive box

The Polyrampe only operates using the variable drive box below:



- 2x10A main switch
- N+6A circuit breaker
- ATV12 0.37kW variable drive
- Marked connection terminal block
- Set of cable glands

→ To be installed next to the cart motor

880 rue Léo Baekeland
85290 Mortagne sur Sèvre- France
+33 (0)2 02 51 63 02
contact@anjouautomation.fr

 **Anjou
Automation**
L'innovation est notre culture