

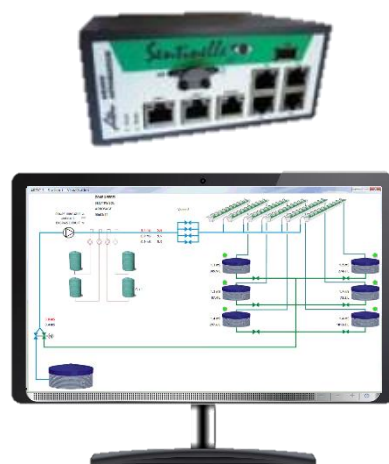
POLYPROG 12



Colour touch screen

Embedded web site:
access via smartphone

Compatible with
existing Supervision



Description

- 12 standard solenoid valves with extension possible up to 48
- Pump/motor relay control.
- Possibility of managing 8 extra pumps
- 12 irrigation groups
- 3 irrigation stations available
- 1 pause input to suspend irrigation
- Management of a Solar meter
- 6 analogue inputs: 3 temperature and 3 hygrometry / tensiometer
- Management of 3 dry contact inputs
- Up to 12 valves operated simultaneously

Functions

- Manual start-up of a group
- Independent time per valve
- Setting of valve times to the second
- Sequential programming
- Filling, irrigation and rinsing step.
- Group start-up modes:
 - Set time
 - Cyclical
 - Calendar
 - Solar meter
 - Dry contact
 - Analogue
 - Safety

880 rue Léo Baekeland
85290 Mortagne sur Sèvre- France
+33 (0)2 02 51 63 02
contact@anjouautomation.fr

Anjou Automation
L'innovation est notre culture