

# MEC0302



## 1/1 left angle transmission for telescopic arm

### Supplementary products

- Telescopic arm: MEC000X
- Telescopic arm: MEC005X
- MEC0203 handle
- MEC14xx-32 or 34
- MEC0132 (+screw)

### Description

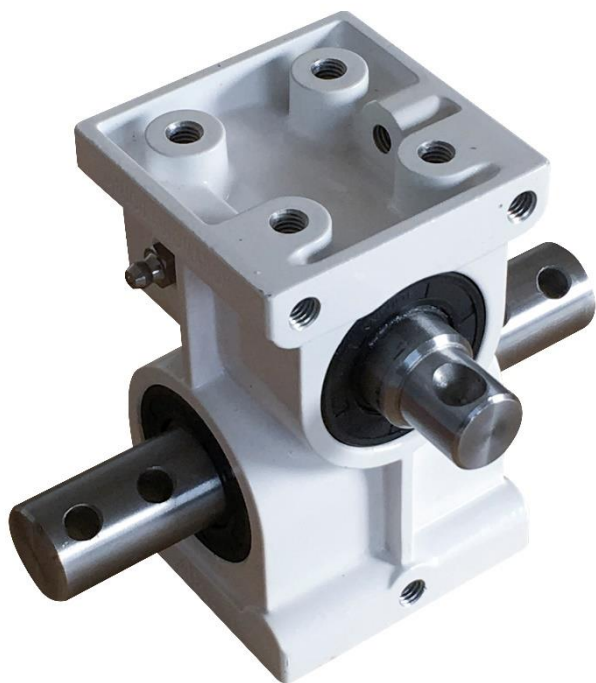
Non reversible transmission under load

Sealed assembly on bearings in a white powder-coated aluminium casing with top-up greaser

Stainless steel drive shaft

### Specifications

Gear	1/1
Operation	Manual/Mot orised
Ø60 tube max. double rolling length	90m
Ø32 tube max. rolling length	140m
Input torque	15Nm
Output torque	70Nm
Weight	2.5kg
	Left



880 rue Léo Baekeland  
85290 Mortagne sur Sèvre- France  
+33 (0)2 02 51 63 02  
contact@anjouautomation.fr